

Anti-PALM3 antibody



Catalog Number: 175632

Product name

Anti-PALM3 antibody

Specificity

Human, Cow

Antibody description

Rabbit polyclonal antibody to PALM3

Preparation

This antigen of this antibody was klh conjugated synthetic peptide derived from human palm3 1-100/673

Formulation

Liquid, Preservative: 15mM Sodium Azide, Constituents: 1% BSA, 0.01M PBS, pH 7.4

Storage

Store at -20°C for one year. Avoid repeated freeze/thaw cycles. The lyophilized antibody is stable at room temperature for at least one month and for greater than a year when kept at -20°C. When reconstituted in sterile pH 7.4 0.01M PBS or diluent of antibody the antibody is stable for at least two weeks at 2-4°C.

Clonality

Polyclonal

Ig Type

Rabbit IgG

Applications

WB

Dilutions

WB:1:500-2000

Validations

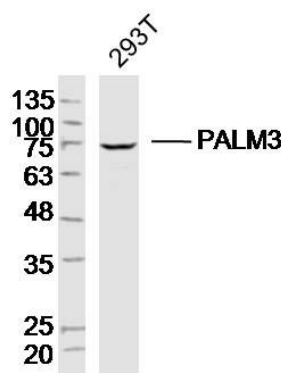


Fig1: Sample:293T (Human)Cell Lysate at 40 ug; Primary: Anti-PALM3 at 1/300 dilution; Secondary: IRDye800CW Goat Anti-RabbitIgG at 1/20000 dilution; Predicted band size: 72kD; Observed band size: 72kD