

# Anti-P2RY8 antibody

Catalog Number: 175629

## Product name

Anti-P2RY8 antibody

## Specificity

Human

## Antibody description

Rabbit polyclonal antibody to P2RY8

## Preparation

This antigen of this antibody was klh conjugated synthetic peptide derived from human p2y8 131-230/359

## Formulation

Liquid, 0.01M TBS(pH7.4) with 1% BSA, 0.03% Proclin300 and 50% Glycerol.

## Storage

Store at -20°C for one year. Avoid repeated freeze/thaw cycles. The lyophilized antibody is stable at room temperature for at least one month and for greater than a year when kept at -20°C. When reconstituted in sterile pH 7.4 0.01M PBS or diluent of antibody the antibody is stable for at least two weeks at 2-4°C.

## Clonality

Polyclonal

## Ig Type

Rabbit IgG

## Applications

WB, FC

## Dilutions

WB:1:500-2000

FC:2ug/Test

## Validations

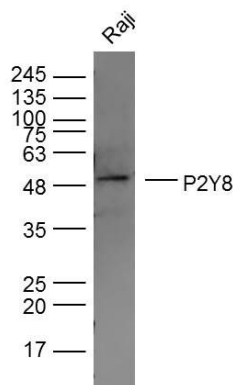
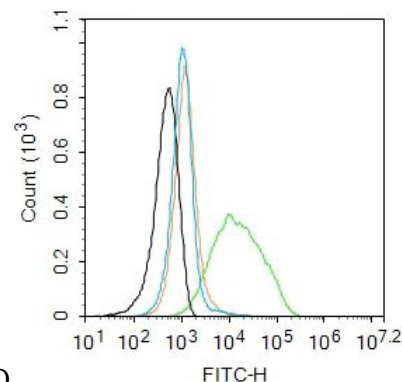


Fig1: Sample:; Raji Cell (Human) Lysate at 30 ug; Primary: Anti- P2Y8 at 1/300 dilution; Secondary: IRDye800CW Goat Anti-Rabbit IgG at 1/20000 dilution; Predicted band size: 66 kD; Observed



band size: 50 kD

Fig2: Blank control: HL60.; Primary Antibody (green line): Rabbit Anti-P2Y8 antibody ; Dilution: 2µg /10<sup>6</sup> cells;; Isotype Control Antibody (orange line): Rabbit IgG .; Secondary Antibody (blue line): Goat anti-rabbit IgG-AF488; Dilution: 1µg /test.;; Protocol; The cells were incubated in 5%BSA to block non-specific protein-protein interactions for 30 min at at room temperature .Cells stained with Primary Antibody for 30 min at room temperature.The secondary antibody used for 40 min at room temperature. Acquisition of 20,000 events was performed.

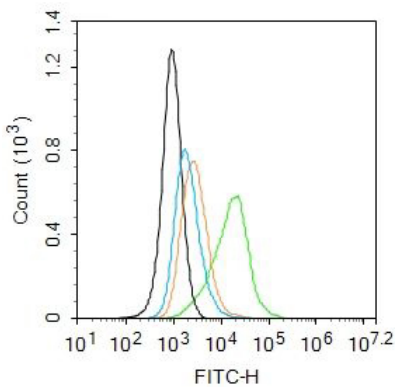


Fig3: Blank control: Raji.; Primary Antibody (green line): Rabbit Anti-P2Y8 antibody ; Dilution: 2µg /10<sup>6</sup> cells;; Isotype Control Antibody (orange line): Rabbit IgG .; Secondary Antibody : Goat anti-rabbit IgG-AF488; Dilution: 1µg /test.; Protocol; The cells were incubated in 5%BSA to block non-specific protein-protein interactions for 30 min at at room temperature .Cells stained with Primary Antibody for 30 min at room temperature. The secondary antibody used for 40 min at room temperature. Acquisition of 20,000 events was performed.