

Anti-P2RY10 antibody

Catalog Number: 175628

Product name

Anti-P2RY10 antibody

Specificity

Human, Mouse, Rat, Horse, Rabbit

Antibody description

Rabbit polyclonal antibody to P2RY10

Preparation

This antigen of this antibody was klh conjugated synthetic peptide derived from human p2y10 151-250/339

Formulation

Liquid, 0.01M TBS(pH7.4) with 1% BSA, 0.03% Proclin300 and 50% Glycerol.

Storage

Store at -20°C for one year. Avoid repeated freeze/thaw cycles. The lyophilized antibody is stable at room temperature for at least one month and for greater than a year when kept at -20°C. When reconstituted in sterile pH 7.4 0.01M PBS or diluent of antibody the antibody is stable for at least two weeks at 2-4°C.

Clonality

Polyclonal

Ig Type

Rabbit IgG

Applications

WB, FC

Dilutions

WB:1:500-2000

FC:1µg/Test

Validations

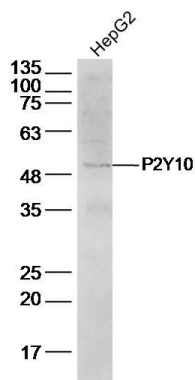


Fig1: Sample:; HepG2 cell(human) Lysate at 30 ug; Primary: Anti-P2Y10 at 1/500 dilution; Secondary: IRDye800CW Goat Anti-Rabbit IgG at 1/20000 dilution; Predicted band size: 39kD; Observed band size: 49 kD

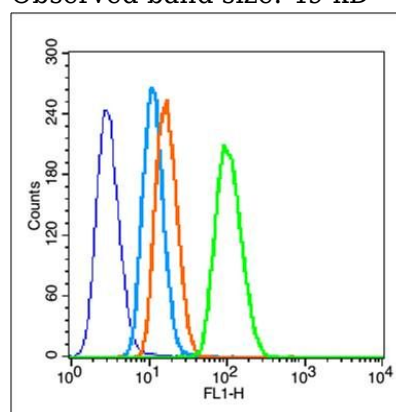


Fig2: Blank control (blue line): raji(fixed with pre-warmed 4% paraformaldehyde for 30min at 37°C); Primary Antibody (green line): Rabbit Anti-P2Y10 antibody ,Dilution: 0.2µg /10⁶ cells;; Isotype Control Antibody (orange line): Rabbit IgG .; Secondary Antibody (white blue line): Goat anti-rabbit IgG-PE,Dilution: 1µg /test.