

# Anti-Oxtr antibody

Catalog Number: 175627

## Product name

Anti-Oxtr antibody

## Specificity

Human, Mouse, Rat, Dog, Pig, Cow, Horse

## Antibody description

Rabbit polyclonal antibody to Oxtr

## Preparation

This antigen of this antibody was klh conjugated synthetic peptide derived from mouse oxytocin receptor 325-388/388

## Formulation

Liquid, 0.01M TBS(pH7.4) with 1% BSA, 0.03% Proclin300 and 50% Glycerol.

## Storage

Store at -20°C for one year. Avoid repeated freeze/thaw cycles.

## Clonality

Polyclonal

## Ig Type

Rabbit IgG

## Applications

WB, IHC-P

## Dilutions

WB:1:500-2000

IHC-P:1:400-800

## Validations

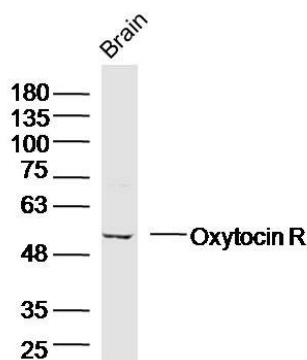


Fig1: Sample:; Brain (Mouse) Lysate at 40 ug; Primary: Anti-Oxytocin R at 1/300 dilution; Secondary: IRDye800CW Goat Anti-Rabbit IgG at 1/20000 dilution; Predicted band size: 43 kD; Observed band size: 53 kD

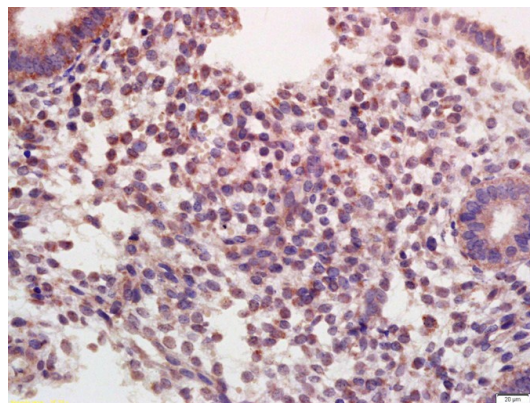


Fig2: Tissue/cell: Human endometrium tissue; 4% Paraformaldehyde-fixed and paraffin-embedded;; Antigen retrieval: citrate buffer ( 0.01M, pH 6.0 ), Boiling bathing for 15min; Block endogenous peroxidase by 3% Hydrogen peroxide for 30min; Blocking buffer (normal goat serum,C-0005) at 37°C for 20 min;; Incubation: Anti-Oxytocin R Polyclonal Antibody, Unconjugated 1:200, overnight at 4°C, followed by conjugation to the secondary antibody(SP-0023) and DAB(C-0010) staining