

Anti-MYRF antibody

Catalog Number: 175578

Product name

Anti-MYRF antibody

Specificity

Human, Mouse, Rat, Chicken, Dog, Pig, Cow, Horse, Rabbit, Sheep

Antibody description

Rabbit polyclonal antibody to MYRF

Preparation

This antigen of this antibody was klh conjugated synthetic peptide derived from human mrf 401-500/1151

Formulation

Liquid, 0.01M TBS(pH7.4) with 1% BSA, 0.03% Proclin300 and 50% Glycerol.

Storage

Store at -20°C for one year. Avoid repeated freeze/thaw cycles. The lyophilized antibody is stable at room temperature for at least one month and for greater than a year when kept at -20°C. When reconstituted in sterile pH 7.4 0.01M PBS or diluent of antibody the antibody is stable for at least two weeks at 2-4°C.

Clonality

Polyclonal

Ig Type

IgG

Applications

WB, IHC-P

Dilutions

WB:1:500-2000

IHC-P:1:400-800

Validations

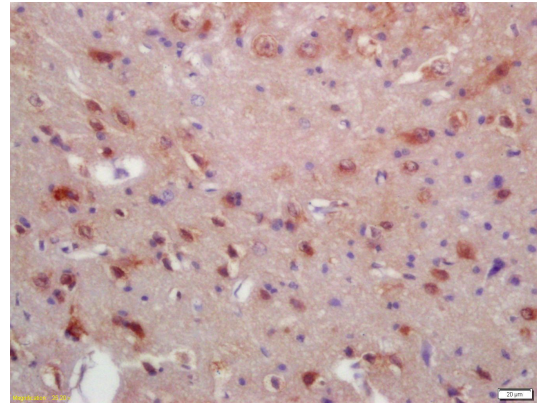


Fig1: Tissue/cell: rat brain tissue; 4% Paraformaldehyde-fixed and paraffin-embedded;; Antigen retrieval: citrate buffer (0.01M, pH 6.0), Boiling bathing for 15min; Block endogenous peroxidase by 3% Hydrogen peroxide for 30min; Blocking buffer (normal goat serum,C-0005) at 37°C for 20 min;; Incubation: Anti-MRF/C11orf9 Polyclonal Antibody, Unconjugated 1:200, overnight at 4°C, followed by conjugation to the secondary antibody(SP-0023) and DAB(C-0010)

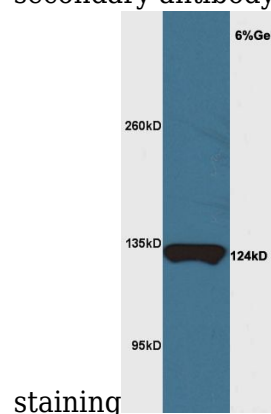


Fig2: Sample: Brain (Mouse) Lysate at 40 ug; Primary: Anti-MRF/C11orf9 at 1/300 dilution; Secondary: HRP conjugated Goat-Anti-rabbit IgG (bs-0295G-HRP) at 1/5000 dilution; Predicted band size: 124 kD; Observed band size: 124 kD

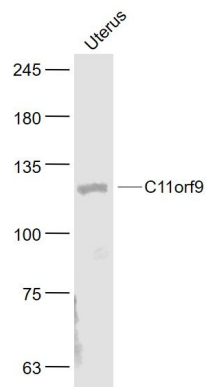
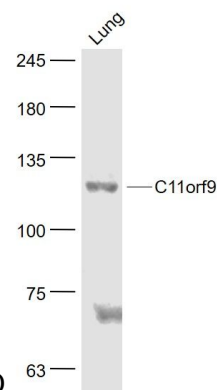


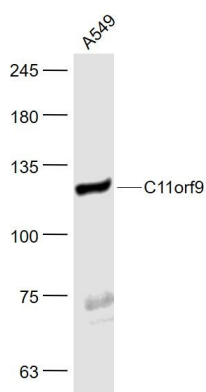
Fig3: Sample:; Uterus (Mouse) Lysate at 40 ug;
Primary: Anti- MRF/C11orf9 at 1/1000 dilution;
Secondary: IRDye800CW Goat Anti-Rabbit IgG at 1/20000 dilution; Predicted band size: 124 kD;

Fig4: Sample:; A549(Human) Cell Lysate at 30 ug;
Primary: Anti- MRF/C11orf9 at 1/1000 dilution;
Secondary: IRDye800CW Goat Anti-Rabbit IgG at 1/20000 dilution; Predicted band size: 124 kD;



Observed band size: 124 kD

Fig5: Sample:; Lung (Mouse) Lysate at 40 ug;
Primary: Anti- MRF/C11orf9 at 1/1000 dilution;
Secondary: IRDye800CW Goat Anti-Rabbit IgG at 1/20000 dilution; Predicted band size: 124 kD;
Observed band size: 124 kD



Observed band size: 124 kD