

Anti-SLC25A37 antibody



Catalog Number: 175575

Product name

Anti-SLC25A37 antibody

Specificity

Human, Mouse, Rat, Chicken, Dog, Pig, Cow, Horse

Antibody description

Rabbit polyclonal antibody to SLC25A37

Preparation

This antigen of this antibody was klh conjugated synthetic peptide derived from human mitoferrin 1 201-300/338

Formulation

Liquid, 0.01M TBS(pH7.4) with 1% BSA, 0.03% Proclin300 and 50% Glycerol.

Storage

Store at -20°C for one year. Avoid repeated freeze/thaw cycles.

Clonality

Polyclonal

Ig Type

Rabbit IgG

Applications

WB

Dilutions

WB:1:500-2000

Validations

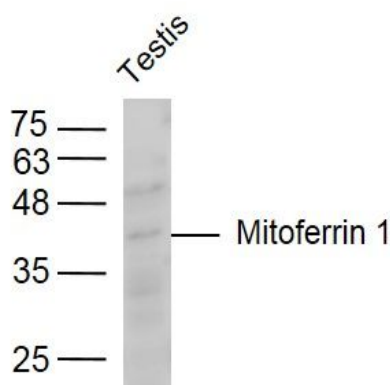


Fig1: Sample:; Testis (Mouse) Lysate at 40 ug; Primary: Anti-Mitoferrin 1 at 1/300 dilution; Secondary: IRDye800CW Goat Anti-Rabbit IgG at 1/20000 dilution; Predicted band size: 37 kD; Observed band size: 37 kD