

# Anti-Abcb1a antibody

Catalog Number: 175571

## Product name

Anti-Abcb1a antibody

## Specificity

Human, Mouse, Rat

## Antibody description

Rabbit polyclonal antibody to Abcb1a

## Preparation

This antigen of this antibody was klh conjugated synthetic peptide derived from human mdr1 21-100/1272

## Formulation

Liquid, 0.01M TBS(pH7.4) with 1% BSA, 0.03% Proclin300 and 50% Glycerol.

## Storage

Store at -20°C for one year. Avoid repeated freeze/thaw cycles. The lyophilized antibody is stable at room temperature for at least one month and for greater than a year when kept at -20°C. When reconstituted in sterile pH 7.4 0.01M PBS or diluent of antibody the antibody is stable for at least two weeks at 2-4°C.

## Clonality

Polyclonal

## Ig Type

Rabbit IgG

## Applications

WB, FC

## Dilutions

WB:1:500-2000

FC:1µg/Test

## Validations

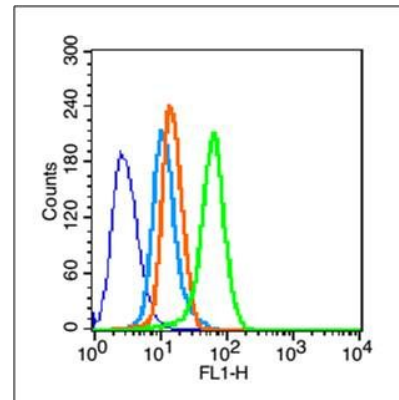


Fig1: Blank control (blue line): Hela (fixed with 70% methanol (Overnight at -20°C) and then permeabilized with ice-cold 90% methanol for 30 min on ice).; Primary Antibody (green line): Rabbit Anti-MDR1 antibody ,Dilution: 1µg /10<sup>6</sup> cells;; Isotype Control Antibody (orange line): Rabbit IgG .; Secondary Antibody (white blue line): Goat anti-rabbit IgG-FITC,Dilution: 1µg /test.

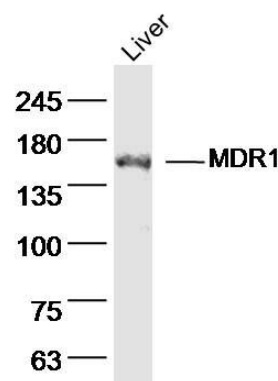


Fig2: Sample: Liver (mouse) Lysate at 40 ug; Primary: Anti- MDR1 at 1/300 dilution; Secondary: IRDye800CW Goat Anti-Rabbit IgG at 1/20000 dilution; Predicted band size: 141kD; Observed band size: 150kD