

Anti-KCTD8 antibody

Catalog Number: 175534

Product name

Anti-KCTD8 antibody

Specificity

Human, Mouse, Rat, Chicken, Dog, Pig, Cow, Horse, Rabbit, Sheep

Antibody description

Rabbit polyclonal antibody to KCTD8

Preparation

This antigen of this antibody was klh conjugated synthetic peptide derived from human kctd8 381-473/473

Formulation

Liquid, 0.01M TBS(pH7.4) with 1% BSA, 0.03% Proclin300 and 50% Glycerol.

Storage

Store at -20°C for one year. Avoid repeated freeze/thaw cycles. The lyophilized antibody is stable at room temperature for at least one month and for greater than a year when kept at -20°C. When reconstituted in sterile pH 7.4 0.01M PBS or diluent of antibody the antibody is stable for at least two weeks at 2-4°C.

Clonality

Polyclonal

Ig Type

Rabbit IgG

Applications

WB

Dilutions

WB:1:500-2000

Validations

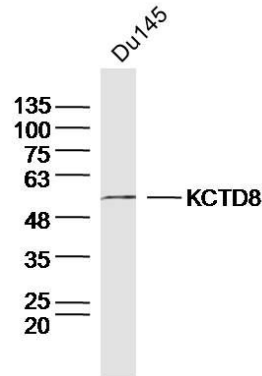
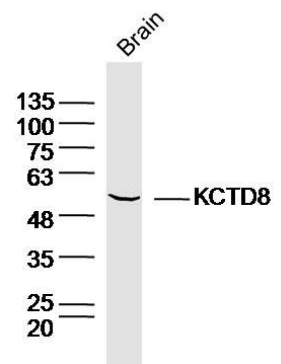
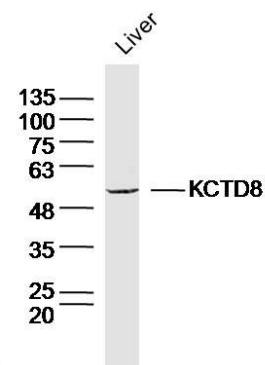


Fig1: Sample: Du145 Cell (Human) Lysate at 30 ug; Primary: Anti-KCTD8 at 1/300 dilution; Secondary: IRDye800CW Goat Anti-Rabbit IgG at 1/20000 dilution; Predicted band size: 52kD;



Observed band size: 52kD

Fig2: Sample: Brain (Mouse) Lysate at 40 ug; Primary: Anti-KCTD8 at 1/300 dilution; Secondary: IRDye800CW Goat Anti-Rabbit IgG at 1/20000 dilution; Predicted band size: 52kD; Observed



band size: 52kD

Fig3: Sample: Liver (Mouse) Lysate at 40 ug; Primary: Anti-KCTD8 at 1/300 dilution; Secondary: IRDye800CW Goat Anti-Rabbit IgG at 1/20000

Anti-KCTD8 antibody



Catalog Number: 175534

dilution; Predicted band size: 52kD; Observed band size: 52kD