

# Anti-ILDR1 antibody

Catalog Number: 175524

## Product name

Anti-ILDR1 antibody

## Specificity

Human, Mouse, Rat, Pig, Cow, Horse, Rabbit, Sheep

## Antibody description

Rabbit polyclonal antibody to ILDR1

## Preparation

This antigen of this antibody was klh conjugated synthetic peptide derived from human ildr1 101-200/546

## Formulation

Liquid, 0.01M TBS(pH7.4) with 1% BSA, 0.03% Proclin300 and 50% Glycerol.

## Storage

Store at -20°C for one year. Avoid repeated freeze/thaw cycles. The lyophilized antibody is stable at room temperature for at least one month and for greater than a year when kept at -20°C. When reconstituted in sterile pH 7.4 0.01M PBS or diluent of antibody the antibody is stable for at least two weeks at 2-4°C.

## Clonality

Polyclonal

## Ig Type

Rabbit IgG

## Applications

WB, FC

## Dilutions

WB:1:500-2000

FC:3ug/Test

## Validations

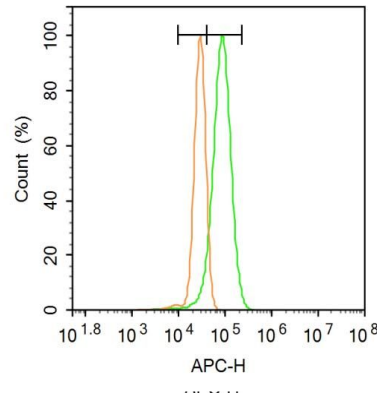
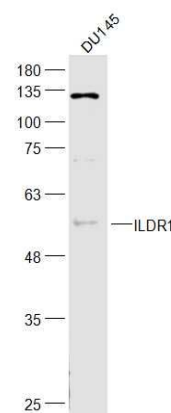


Fig1: Blank control: A431.; Primary Antibody (green line): Rabbit Anti-ILDR1 antibody ; Dilution: 1µg /10<sup>6</sup> cells;; Isotype Control Antibody (orange line): Rabbit IgG .; Secondary Antibody: Goat anti-rabbit IgG-AF647; Dilution: 1µg /test.; Protocol; The cells were fixed with 4% PFA (10min at room temperature)and then permeabilized with 20% PBST for 20 min at room temperature. The cells were then incubated in 5%BSA to block non-specific protein-protein interactions for 30 min at -20°C .Cells stained with Primary Antibody for 30 min at room temperature. The secondary antibody used for 40 min at room temperature. Acquisition of 20,000 events was



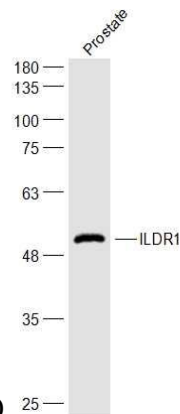
performed.

Fig2: Sample;; DU145(Human) Cell Lysate at 30 ug; Primary: Anti-ILDR1 at 1/300 dilution; Secondary: IRDye800CW Goat Anti-Rabbit IgG at 1/20000 dilution; Predicted band size: 60 kD;

# Anti-ILDR1 antibody

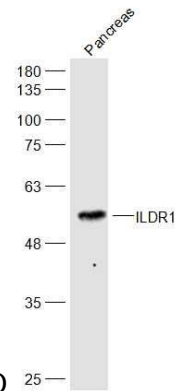


Catalog Number: 175524



Observed band size: 56 kD

Fig3: Sample:; Prostate(Rat) Cell Lysate at 40 ug; Primary: Anti-ILDR1 at 1/300 dilution; Secondary: IRDye800CW Goat Anti-Rabbit IgG at 1/20000 dilution; Predicted band size: 60 kD; Observed



band size: 56 kD

Fig4: Sample:; Pancreas(Mouse) Cell Lysate at 40 ug; Primary: Anti-ILDR1 at 1/300 dilution; Secondary: IRDye800CW Goat Anti-Rabbit IgG at 1/20000 dilution; Predicted band size: 60 kD; Observed band size: 56kD