

Anti-Igsf8 antibody

Catalog Number: 175512

Product name

Anti-Igsf8 antibody

Specificity

Human, Mouse, Rat, Pig, Cow, Horse

Antibody description

Rabbit polyclonal antibody to Igsf8

Preparation

This antigen of this antibody was klh conjugated synthetic peptide derived from mouse igsf8 101-200/611

Formulation

Liquid, 0.01M TBS(pH7.4) with 1% BSA, 0.03% Proclin300 and 50% Glycerol.

Storage

Store at -20°C for one year. Avoid repeated freeze/thaw cycles. The lyophilized antibody is stable at room temperature for at least one month and for greater than a year when kept at -20°C. When reconstituted in sterile pH 7.4 0.01M PBS or diluent of antibody the antibody is stable for at least two weeks at 2-4°C.

Clonality

Polyclonal

Ig Type

IgG

Applications

WB, FC

Dilutions

WB:1:500-2000

FC:1ug/Test

Validations

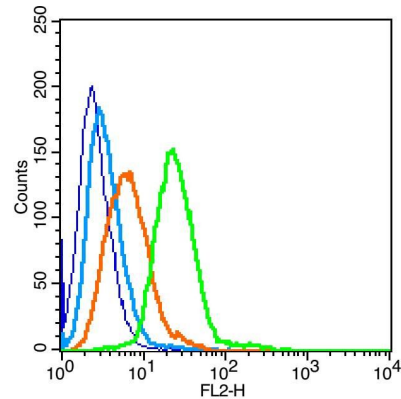


Fig1: Blank control(blue):Raji (fixed with 2% paraformaldehyde (10 min)).; Primary Antibody:Rabbit Anti-IGSF8 antibody , Dilution: 1µg in 100 µL 1X PBS containing 0.5% BSA;; Isotype Control Antibody: Rabbit IgG(orange), used under the same conditions);; Secondary Antibody: Goat anti-rabbit IgG-PE(white blue), Dilution: 1:200 in 1 X PBS containing 0.5% BSA.

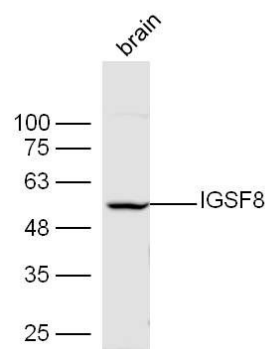


Fig2: Sample: Brain(Mouse) lysate at 30ug;; Primary: Anti-IGSF8 at 1:300 dilution;; Secondary: HRP conjugated Goat-Anti-rabbit IgG(bs-0295G-HRP) at 1: 5000 dilution ;; Predicted band size: 62 kD; Observed band size: 55 kD