

Anti-GALR2 antibody



Catalog Number: 175441

Product name

Anti-GALR2 antibody

Specificity

Human, Mouse, Rat, Dog, Pig, Cow, Horse, Sheep

Antibody description

Rabbit polyclonal antibody to GALR2

Preparation

This antigen of this antibody was klh conjugated synthetic peptide derived from human galr2 51-150/387

Formulation

Liquid, 0.01M TBS(pH7.4) with 1% BSA, 0.03% Proclin300 and 50% Glycerol.

Storage

Store at -20°C for one year. Avoid repeated freeze/thaw cycles. The lyophilized antibody is stable at room temperature for at least one month and for greater than a year when kept at -20°C. When reconstituted in sterile pH 7.4 0.01M PBS or diluent of antibody the antibody is stable for at least two weeks at 2-4°C.

Clonality

Polyclonal

Ig Type

Rabbit IgG

Applications

WB, FC

Dilutions

WB:1:500-2000

FC:1µg/Test

Validations

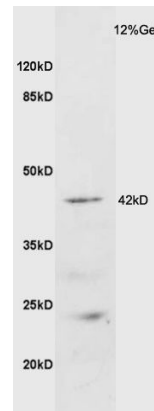


Fig1: Sample: Brain (Mouse) Lysate at 40 ug; Primary: Anti-GALR2 at 1/300 dilution; Secondary: HRP conjugated Goat-Anti-rabbit IgG (bs-0295G-HRP) at 1/5000 dilution; Predicted band size: 42 kD; Observed band size: 42 kD

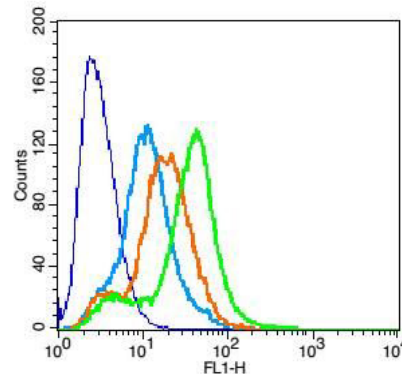


Fig2: Positive control: RSC96; Isotype Control Antibody: Rabbit IgG ; Secondary Antibody: Goat anti-rabbit IgG-FITC, Dilution: 1:100 in 1 X PBS containing 0.5% BSA ; Primary Antibody Dilution: 1µg in 100 µL1X PBS containing 0.5% BSA.

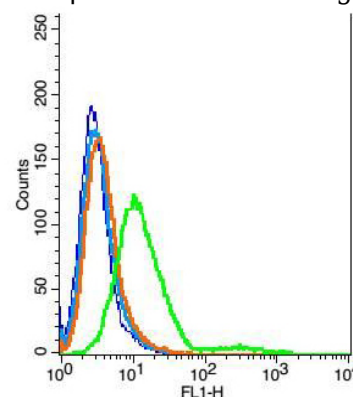


Fig3: Positive control: H9C2; Isotype Control

Anti-GALR2 antibody



Catalog Number: 175441

Antibody: Rabbit IgG ; Secondary Antibody: Goat anti-rabbit IgG-FITC, Dilution: 1:100 in 1 X PBS

containing 0.5% BSA ; Primary Antibody Dilution: 6µg in 100 µL 1X PBS containing 0.5% BSA.