

Anti-DGKI antibody



Catalog Number: 175374

Product name

Anti-DGKI antibody

WB:1:500-2000

IHC-P:1:400-800

Specificity

Human, Mouse, Rat, Dog, Cow, Rabbit, Sheep

Validations

Antibody description

Rabbit polyclonal antibody to DGKI

Preparation

This antigen of this antibody was klh conjugated synthetic peptide derived from human dgki 101-200/1065

Formulation

Liquid, 0.01M TBS(pH7.4) with 1% BSA, 0.03% Proclin300 and 50% Glycerol.

Storage

Store at -20°C for one year. Avoid repeated freeze/thaw cycles. The lyophilized antibody is stable at room temperature for at least one month and for greater than a year when kept at -20°C. When reconstituted in sterile pH 7.4 0.01M PBS or diluent of antibody the antibody is stable for at least two weeks at 2-4°C.

Clonality

Polyclonal

Ig Type

Rabbit IgG

Applications

WB, IHC-P

Dilutions

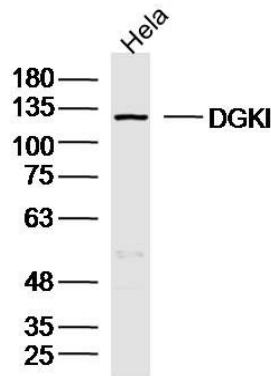


Fig1: Sample:HeLa (Human)Cell Lysate at 40 ug; Primary: Anti-DGKI at 1/300 dilution; Secondary: IRDye800CW Goat Anti-RabbitIgG at 1/20000 dilution; Predicted band size: 117kD; Observed band size: 117kD

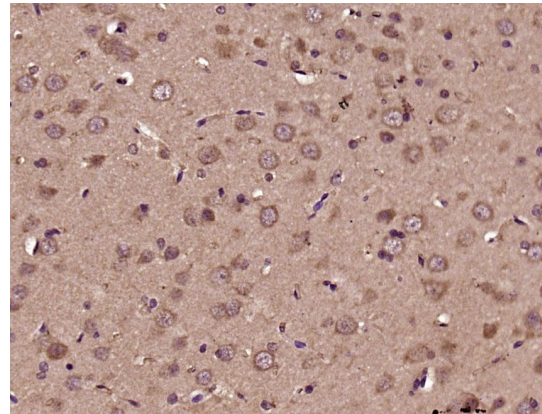


Fig2: Paraformaldehyde-fixed, paraffin embedded (Rat brain); Antigen retrieval by boiling in sodium citrate buffer (pH6.0) for 15min; Block endogenous peroxidase by 3% hydrogen peroxide for 20 minutes; Blocking buffer (normal goat serum) at 37°C for 30min; Antibody incubation with (DGKI) Polyclonal Antibody, Unconjugated at 1:500 overnight at 4°C, followed by a conjugated secondary (sp-0023) for 20 minutes and DAB staining.