

# Anti-Cxcr4 antibody

Catalog Number: 175354

## Product name

Anti-Cxcr4 antibody

## Specificity

Mouse, Rat

## Antibody description

Rabbit polyclonal antibody to Cxcr4

## Preparation

This antigen of this antibody was klh conjugated synthetic peptide derived from mouse cxcr4 151-300/359

## Formulation

Liquid, Preservative: 15mM Sodium Azide, Constituents: 1% BSA, 0.01M PBS, pH 7.4

## Storage

Store at -20°C for one year. Avoid repeated freeze/thaw cycles. The lyophilized antibody is stable at room temperature for at least one month and for greater than a year when kept at -20°C. When reconstituted in sterile pH 7.4 0.01M PBS or diluent of antibody the antibody is stable for at least two weeks at 2-4°C.

## Clonality

Polyclonal

## Ig Type

Rabbit IgG

## Applications

WB, FC

## Dilutions

WB:1:500-2000

FC:3µg/Test

## Validations

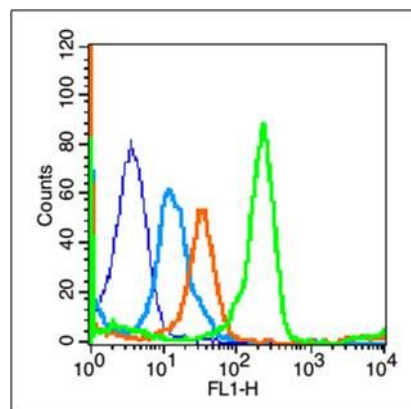


Fig1: Blank control (blue line): Mouse Spleen cells (fixed with 70% methanol (Overnight at 4°C)); Primary Antibody (green line): Rabbit Anti-CXCR4 antibody ,Dilution: 3µg /10<sup>6</sup> cells;; Isotype Control Antibody (orange line): Rabbit IgG .; Secondary Antibody (white blue line): Goat anti-rabbit IgG-FITC<,Dilution: 1µg /test.

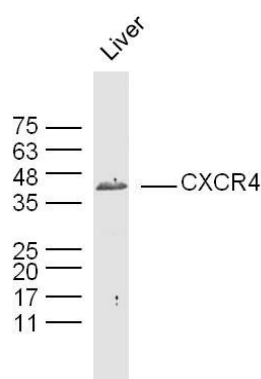


Fig2: Sample:liver(mouse) Lysate at 40 ug; Primary: Anti-CXCR4 at 1/300 dilution; Secondary: IRDye800CW Goat Anti-Rabbit IgG at 1/20000 dilution; Predicted band size: 40kD; Observed band size: 40kD