

# Anti-CPNE2 antibody



Catalog Number: 175342

## General Information

### Product name:

Anti-CPNE2 antibody

### Immunogen:

### Applications:

WB

### Specificity:

Human, Mouse, Rat, Chicken, Dog, Pig, Cow, Rabbit, Sheep

### Antibody description:

Rabbit polyclonal antibody to CPNE2

## Properties

### Preparation:

This antigen of this antibody was klh conjugated synthetic peptide derived from human cpne2 81-180/548

### Formulation:

Liquid, 0.01M TBS(pH7.4) with 1% BSA, 0.03% Proclin300 and 50% Glycerol.

### Storage:

Store at -20°C for one year. Avoid repeated freeze/thaw cycles. The lyophilized antibody is stable at room temperature for at least one month and for greater than a year when kept at -20°C. When reconstituted in sterile pH 7.4 0.01M PBS or diluent of antibody the antibody is stable for at least two weeks at 2-4°C.

### Clonality:

Polyclonal

**Ig Type:** IgG

## Applications

WB: 1:500-2000

## Validations

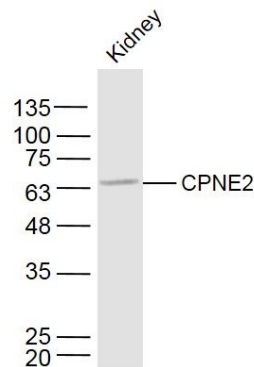


Fig1: Sample:; Kidney (Mouse) Lysate at 40 ug; Primary: Anti- CPNE2 at 1/300 dilution; Secondary: IRDye800CW Goat Anti-Rabbit IgG at 1/20000 dilution; Predicted band size: 61 kD; Observed band size: 61 kD