

Anti-Ptprc antibody

Catalog Number: 175318

Product name

Anti-Ptprc antibody

Specificity

Human, Mouse, Rat

Antibody description

Rabbit polyclonal antibody to Ptprc

Preparation

This antigen of this antibody was klh conjugated synthetic peptide derived from rat cd45/b220 501-600/1273

Formulation

Liquid, 0.01M TBS(pH7.4) with 1% BSA, 0.03% Proclin300 and 50% Glycerol.

Storage

Store at -20°C for one year. Avoid repeated freeze/thaw cycles. The lyophilized antibody is stable at room temperature for at least one month and for greater than a year when kept at -20°C. When reconstituted in sterile pH 7.4 0.01M PBS or diluent of antibody the antibody is stable for at least two weeks at 2-4°C.

Clonality

Polyclonal

Ig Type

Rabbit IgG

Applications

WB, FC

Dilutions

WB:1:500-2000

FC:1µg/Test

Validations

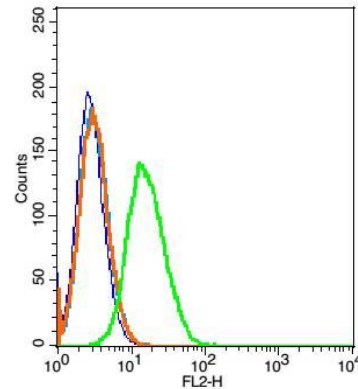


Fig1: Blank control: Raji(blue).; Primary Antibody:Rabbit Anti- CD45 antibody , Dilution: 1µg in 100 1µL 1X PBS containing 0.5% BSA;; Isotype Control Antibody: Rabbit IgG(orange) ,used under the same conditions);; Secondary Antibody: Goat anti-rabbit IgG-PE(white blue), Dilution: 1:200 in 1 X PBS containing 0.5% BSA.

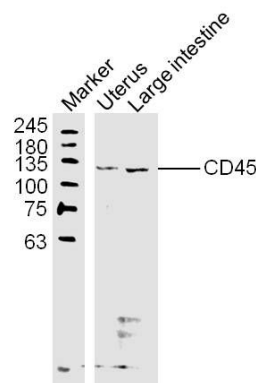
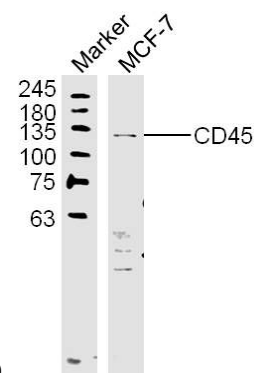


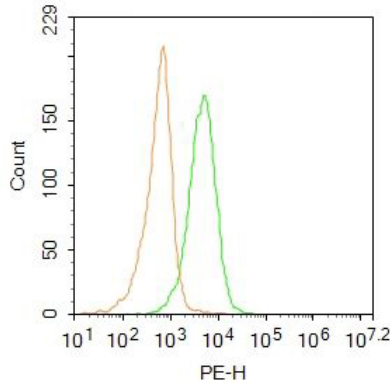
Fig2: Sample;; Uterus (Mouse) Lysate at 40 ug; Large intestine (Mouse) Lysate at 40 ug; Primary: Anti-CD45 at 1/300 dilution; Secondary: IRDye800CW Goat Anti-Rabbit IgG at 1/20000 dilution; Predicted band size: 137 kD; Observed



band size: 130 kD

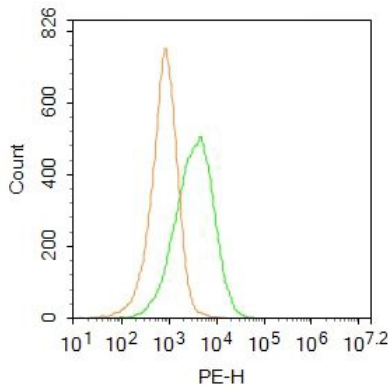
Catalog Number: 175318

Fig3: Sample:; MCF-7 (Human) Lysate at 40 ug;
Primary: Anti-CD45 at 1/300 dilution; Secondary:
IRDye800CW Goat Anti-Rabbit IgG at 1/20000
dilution; Predicted band size: 137 kD; Observed



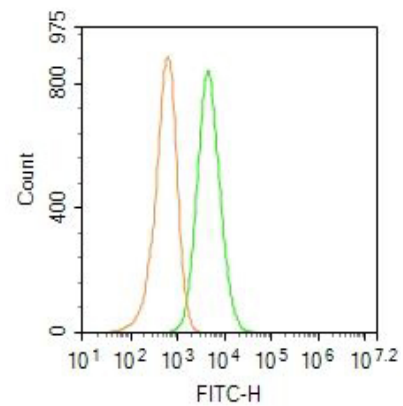
band size: 130 kD

Fig4: Blank control: Molt4.; Primary Antibody
(green line): Rabbit Anti-CD45 antibody ; Dilution:
2µg /10⁶ cells;; Isotype Control Antibody (orange
line): Rabbit IgG .; Secondary Antibody : Goat anti-
rabbit IgG-PE; Dilution: 1µg /test.; Protocol; The
cells were incubated in 5%BSA to block non-
specific protein-protein interactions for 30 min at
at room temperature .Cells stained with Primary
Antibody for 30 min at room temperature. The
secondary antibody used for 40 min at room
temperature. Acquisition of 20,000 events was



performed.

Fig5: Blank control: Jurkat.; Primary Antibody
(green line): Rabbit Anti-CD45 antibody ; Dilution:
2µg /10⁶ cells;; Isotype Control Antibody (orange
line): Rabbit IgG .; Secondary Antibody : Goat anti-
rabbit IgG-PE; Dilution: 1µg /test.; Protocol; The
cells were incubated in 5%BSA to block non-
specific protein-protein interactions for 30 min at
at room temperature .Cells stained with Primary
Antibody for 30 min at room temperature. The
secondary antibody used for 40 min at room
temperature. Acquisition of 20,000 events was



performed.

Fig6: Blank control: Molt4.; Primary Antibody
(green line): Rabbit Anti-CD45/PTPRC/FITC
Conjugated antibody (175318#-FITC); Dilution:
1µg /10⁶ cells;; Isotype Control Antibody (orange
line): Rabbit IgG-FITC .; Protocol; The cells were
fixed with 4% PFA (10min at room
temperature)and then permeabilized with 0.1%
PBST for 20 min at-20°C. The cells were then
incubated in 5% BSA to block non-specific protein-
protein interactions for 30 min at room
temperature. The cells were stained with Primary
Antibody for 30 min at room temperature.
Acquisition of 20,000 events was performed.