

# Anti-DDR2 antibody

Catalog Number: 175313

## Product name

Anti-DDR2 antibody

## Specificity

Human, Mouse, Rat, Chicken, Dog, Pig, Cow, Horse, Rabbit

## Antibody description

Rabbit polyclonal antibody to DDR2

## Preparation

This antigen of this antibody was klh conjugated synthetic peptide derived from human cd167b 245-350/855

## Formulation

Liquid, 0.01M TBS(pH7.4) with 1% BSA, 0.03% Proclin300 and 50% Glycerol.

## Storage

Store at -20°C for one year. Avoid repeated freeze/thaw cycles. The lyophilized antibody is stable at room temperature for at least one month and for greater than a year when kept at -20°C. When reconstituted in sterile pH 7.4 0.01M PBS or diluent of antibody the antibody is stable for at least two weeks at 2-4°C.

## Clonality

Polyclonal

## Ig Type

IgG

## Applications

WB, FC

## Dilutions

WB:1:500-2000

FC:1ug/test

## Validations

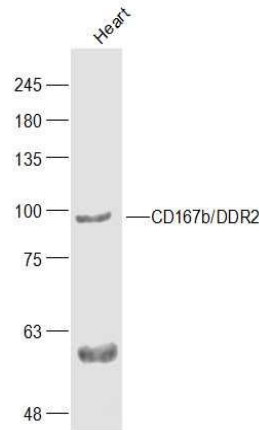


Fig1: Sample:; Heart(Mouse) Cell Lysate at 40 ug; Primary: Anti-CD167b/DDR2 at 1/300 dilution; Secondary: IRDye800CW Goat Anti-Rabbit IgG at 1/20000 dilution; Predicted band size: 92 kD; Observed band size: 92 kD

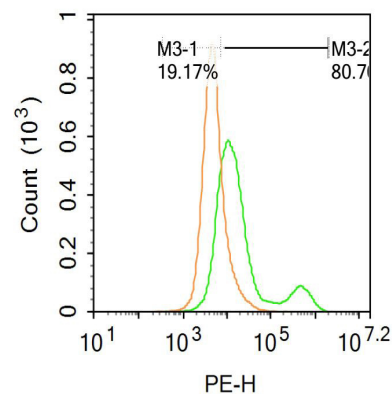


Fig2: Blank control: U87MG.; Primary Antibody (green line): Rabbit Anti-CD167b/DDR2 antibody ; Dilution: 1µg /10<sup>6</sup> cells;; Isotype Control Antibody (orange line): Rabbit IgG .; Secondary Antibody : Goat anti-rabbit IgG-PE; Dilution: 1µg /test.; The cells were incubated in 5%BSA to block non-specific protein-protein interactions for 30 min at at room temperature .Cells stained with Primary Antibody for 30 min at room temperature. The secondary antibody used for 40 min at room temperature. Acquisition of 20,000 events was

# Anti-DDR2 antibody



Catalog Number: 175313

---

Fig3: Sample:; Heart (Mouse) Lysate at 40 ug;  
Primary: Anti-DDR2 at 1/300 dilution; Secondary:  
IRDye800CW Goat Anti-Rabbit IgG at 1/20000  
dilution; Predicted band size: 92 kD; Observed  
band size: 92 kD

