

Anti-Klrb1c antibody



Catalog Number: 175312

Product name

Anti-Klrb1c antibody

Specificity

Human, Mouse, Rat

Antibody description

Rabbit polyclonal antibody to Klrb1c

Preparation

This antigen of this antibody was klh conjugated synthetic peptide derived from mouse cd161/nk1.1 101-200/223

Formulation

Liquid, 0.01M TBS(pH7.4) with 1% BSA, 0.03% Proclin300 and 50% Glycerol.

Storage

Store at -20°C for one year. Avoid repeated freeze/thaw cycles. The lyophilized antibody is stable at room temperature for at least one month and for greater than a year when kept at -20°C. When reconstituted in sterile pH 7.4 0.01M PBS or diluent of antibody the antibody is stable for at least two weeks at 2-4°C.

Clonality

Polyclonal

Ig Type

Rabbit IgG

Applications

WB

Dilutions

WB:1:500-2000

Validations

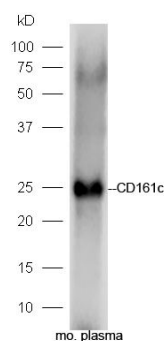


Fig1: Sample: Plasma (Mouse) Lysate at 40 ug; Primary: Anti-CD161c at 1/300 dilution; Secondary: HRP conjugated Goat-Anti-rabbit IgG (bs-0295G-HRP) at 1/5000 dilution; Predicted band size: 25 kD; Observed band size: 25 kD