

Anti-CD101 antibody



Catalog Number: 175311

Product name

Anti-CD101 antibody

Specificity

Human, Mouse, Rat

Antibody description

Rabbit polyclonal antibody to CD101

Preparation

This antigen of this antibody was klh conjugated synthetic peptide derived from human cd101 51-150/1021

Formulation

Liquid, 0.01M TBS(pH7.4) with 1% BSA, 0.03% Proclin300 and 50% Glycerol.

Storage

Store at -20°C for one year. Avoid repeated freeze/thaw cycles. The lyophilized antibody is stable at room temperature for at least one month and for greater than a year when kept at -20°C. When reconstituted in sterile pH 7.4 0.01M PBS or diluent of antibody the antibody is stable for at least two weeks at 2-4°C.

Clonality

Polyclonal

Ig Type

Rabbit IgG

Applications

WB, ICC/IF, FC

Dilutions

WB:1:500-2000

FC:1µg/Test

IF:1:10-100

ICC/IF:1:100-500

Validations

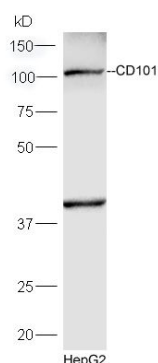


Fig1: Protein: HepG2(human) lysates at 30ug;; Primary: rabbit Anti-CD101 at 1:300;; Secondary: HRP conjugated Goat-Anti-rabbit IgG(bs-0295G-HRP) at 1: 5000;; Predicted band size:113 kD
Observed band size:113 kD

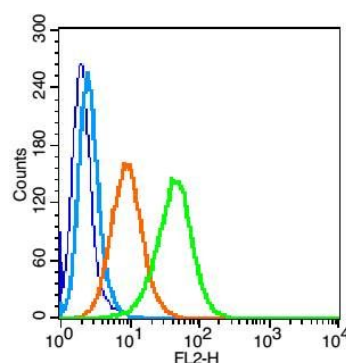


Fig2: Blank control(blue): U937(fixed with 2% paraformaldehyde (10 min)).; Primary Antibody:Rabbit Anti-CD101 antibody , Dilution: 1µg in 100 µL 1X PBS containing 0.5% BSA;; Isotype Control Antibody: Rabbit IgG(orange) ,used under the same conditions);; Secondary Antibody: Goat anti-rabbit IgG-PE(white blue), Dilution: 1:200 in 1 X PBS containing 0.5% BSA.