

Anti-CCDC39 antibody



Catalog Number: 175303

Product name

Anti-CCDC39 antibody

Specificity

Human, Mouse, Rat, Cow, Horse, Rabbit

Antibody description

Rabbit polyclonal antibody to CCDC39

Preparation

This antigen of this antibody was klh conjugated synthetic peptide derived from human ccdc39 651-750/941

Formulation

Liquid, 0.01M TBS(pH7.4) with 1% BSA, 0.03% Proclin300 and 50% Glycerol.

Storage

Store at -20°C for one year. Avoid repeated freeze/thaw cycles. The lyophilized antibody is stable at room temperature for at least one month and for greater than a year when kept at -20°C. When reconstituted in sterile pH 7.4 0.01M PBS or diluent of antibody the antibody is stable for at least two weeks at 2-4°C.

Clonality

Polyclonal

Ig Type

Rabbit IgG

Applications

WB

Dilutions

WB:1:500-2000

Validations

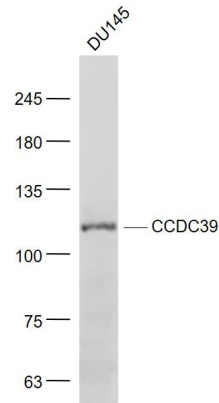
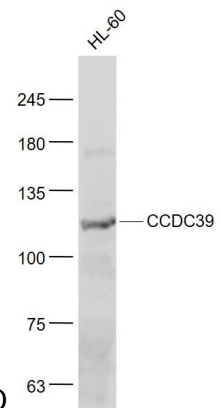


Fig1: Sample:; DU145(Human) Cell Lysate at 30 ug; Primary: Anti- CCDC39 at 1/1000 dilution; Secondary: IRDye800CW Goat Anti-Rabbit IgG at 1/20000 dilution; Predicted band size: 110 kD;



Observed band size: 110 kD

Fig2: Sample:; HL-60(Human) Cell Lysate at 30 ug; Primary: Anti- CCDC39 at 1/1000 dilution; Secondary: IRDye800CW Goat Anti-Rabbit IgG at 1/20000 dilution; Predicted band size: 110 kD; Observed band size: 110 kD