

Anti-C2CD4D antibody



Catalog Number: 175258

Product name

Polyclonal

Anti-C2CD4D antibody

Ig Type

Specificity

Rabbit IgG

Human, Mouse, Rat, Pig, Cow

Applications

Antibody description

WB

Rabbit polyclonal antibody to C2CD4D

Dilutions

Preparation

WB:1:500-2000

This antigen of this antibody was klh conjugated synthetic peptide derived from human c2cd4d 101-200/353

Validations

Formulation

Liquid, 0.01M TBS(pH7.4) with 1% BSA, 0.03% Proclin300 and 50% Glycerol.

Storage

Store at -20°C for one year. Avoid repeated freeze/thaw cycles. The lyophilized antibody is stable at room temperature for at least one month and for greater than a year when kept at -20°C. When reconstituted in sterile pH 7.4 0.01M PBS or diluent of antibody the antibody is stable for at least two weeks at 2-4°C.

Clonality

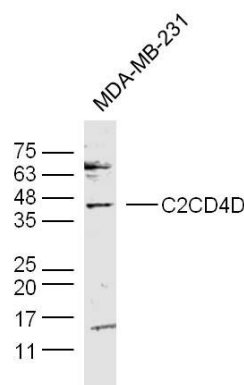


Fig1: Lane 1: (Human/cell line)MDA-MB-231lysatesprobed withC2CD4DPolyclonal Antibody, Unconjugated (Catalog #175258#) at 1:300 overnight at 4xC. Followed by a conjugated secondary antibody (Secondary Catalog #926-32211) at 1:10000 for 60 min at 37xC.