

Anti-TRMT1L antibody



Catalog Number: 175244

Product name

Anti-TRMT1L antibody

Specificity

Human, Mouse, Rat, Dog, Cow, Horse, Rabbit, Sheep

Antibody description

Rabbit polyclonal antibody to TRMT1L

Preparation

This antigen of this antibody was klh conjugated synthetic peptide derived from human c1orf25 631-733/733

Formulation

Liquid, 0.01M TBS(pH7.4) with 1% BSA, 0.03% Proclin300 and 50% Glycerol.

Storage

Store at -20°C for one year. Avoid repeated freeze/thaw cycles. The lyophilized antibody is stable at room temperature for at least one month and for greater than a year when kept at -20°C. When reconstituted in sterile pH 7.4 0.01M PBS or diluent of antibody the antibody is stable for at least two weeks at 2-4°C.

Clonality

Polyclonal

Ig Type

Rabbit IgG

Applications

WB

Dilutions

WB:1:500-2000

Validations

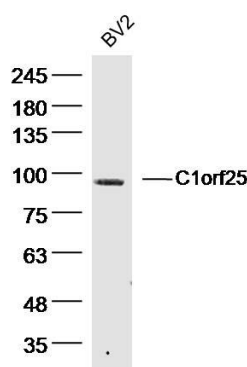


Fig1: Sample: BV2 Cell (Mouse) Lysate at 40 ug; Primary: Anti-C1orf25 at 1/300 dilution; Secondary: IRDye800CW Goat Anti-Rabbit IgG at 1/20000 dilution; Predicted band size: 82 kD; Observed band size: 90 kD