

# Anti-BST1 antibody

Catalog Number: 175221

## Product name

Anti-BST1 antibody

## Specificity

Human, Mouse, Rat, Dog, Pig, Cow, Rabbit

## Antibody description

Rabbit polyclonal antibody to BST1

## Preparation

This antigen of this antibody was klh conjugated synthetic peptide derived from human bst1/cd157 51-150/318

## Formulation

Liquid, 0.01M TBS(pH7.4) with 1% BSA, 0.03% Proclin300 and 50% Glycerol.

## Storage

Store at -20°C for one year. Avoid repeated freeze/thaw cycles. The lyophilized antibody is stable at room temperature for at least one month and for greater than a year when kept at -20°C. When reconstituted in sterile pH 7.4 0.01M PBS or diluent of antibody the antibody is stable for at least two weeks at 2-4°C.

## Clonality

Polyclonal

## Ig Type

Rabbit IgG

## Applications

WB, FC

## Dilutions

WB:1:500-2000

FC:1µg/Test

## Validations

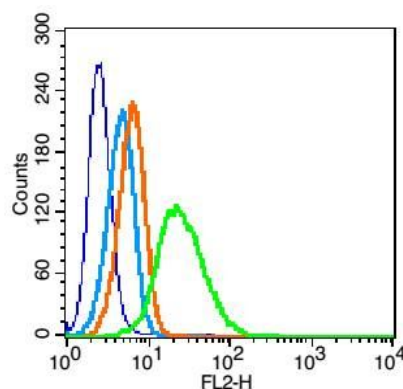


Fig1: Blank control: U937(blue).; Primary Antibody: Rabbit Anti-BST1 antibody , Dilution: 1µg in 100 µL 1X PBS containing 0.5% BSA;; Isotype Control Antibody: Rabbit IgG (orange) ,used under the same conditions.; Secondary Antibody: Goat anti-rabbit IgG-PE(white blue), Dilution: 1:200 in 1 X PBS containing 0.5% BSA.; Protocol; The cells were fixed with 2% paraformaldehyde (10 min).Primary antibody ( 1µg /1x10<sup>6</sup> cells) were incubated for 30 min on the ice, followed by 1 X PBS containing 0.5% BSA + 10% goat serum (15 min) to block non-specific protein-protein interactions. Then the Goat Anti-rabbit IgG/PE antibody was added into the blocking buffer mentioned above to react with the primary antibody at 1/200 dilution for 30 min on ice. Acquisition of 20,000 events was performed.

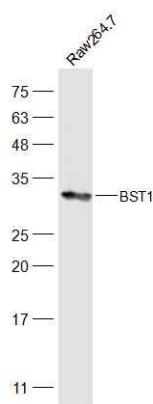


Fig2: Sample.; Raw264.7(Mouse) Cell Lysate at 30 ug; Primary: Anti-BST1 at 1/500 dilution; Secondary: IRDye800CW Goat Anti-Rabbit IgG at 1/20000 dilution; Predicted band size: 33 kD; Observed band size: 33 kD