

Product name

Anti- antibody

Specificity

Arabidopsis thaliana

Antibody description

Rabbit polyclonal antibody to

Preparation

This antigen of this antibody was synthetic peptide within *thaliana* beta-adaptin-like protein aa 782-831 / 841.

Formulation

Liquid, 1*PBS (pH7.4), 0.2% BSA, 50% Glycerol.
Preservative: 0.05% Sodium Azide.

Storage

Store at +4°C after thawing. Aliquot store at -20°C. Avoid repeated freeze / thaw cycles.

Clonality

Polyclonal

Ig Type

Rabbit IgG

Applications

IHC-P, FC

Dilutions

IHC-P:1:50-1:200

FC:1:50-1:100

Validations

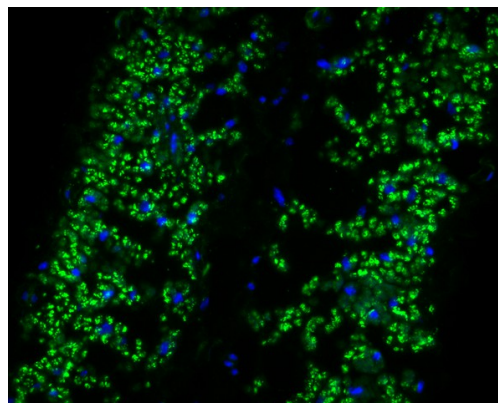
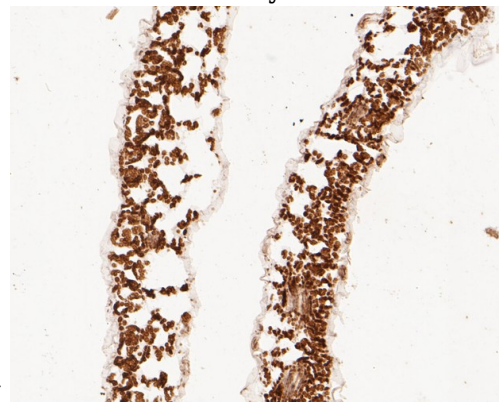


Fig1:: Immunohistochemical analysis of paraffin-embedded *A. thaliana* tissue using anti-Beta-adaptin-like protein A antibody. The section was pre-treated using heat mediated antigen retrieval with Tris-EDTA buffer (pH 8.0-8.4) for 20 minutes. The tissues were blocked in 5% BSA for 30 minutes at room temperature, washed with ddH₂O and PBS, and then probed with the primary antibody (1/50) for 30 minutes at room temperature. The detection was performed using an HRP conjugated compact polymer system. DAB was used as the chromogen. Tissues were counterstained with hematoxylin and mounted



with DPX.

Fig2:: Immunofluorescence staining of paraffin-embedded *A. thaliana* using anti-Beta-adaptin-like protein A antibody. The section was pre-treated using heat mediated antigen retrieval with Tris-EDTA buffer (pH 9.0) for 20 minutes. (sodium citrate buffer (pH6) for 20 mins.) The tissues were blocked in 10% negative goat serum for 1 hour at room temperature, washed with PBS, and then probed with 175164# at 1/50 dilution for 10 hours at 4°C and detected using Alexa Fluor® 488 conjugate-Goat anti-Rabbit IgG (H+L) Secondary

Anti- antibody



Catalog Number: 175164

Antibody at a dilution of 1:500 for 1 hour at room temperature.