

Anti-BLOS1 antibody



Catalog Number: 175143

Product name

Anti-BLOS1 antibody

Specificity

Rice, Arabidopsis thaliana

Antibody description

Rabbit polyclonal antibody to BLOS1

Preparation

This antigen of this antibody was synthetic peptide within thaliana blos1 aa 31-70.

Formulation

Liquid, 1*PBS (pH7.4), 0.2% BSA, 50% Glycerol.
Preservative: 0.05% Sodium Azide.

Storage

Store at +4°C after thawing. Aliquot store at -20°C. Avoid repeated freeze / thaw cycles.

Clonality

Polyclonal

Ig Type

Rabbit IgG

Applications

WB, IHC-P

Dilutions

WB:1:500-1:2,000

IHC-P:1:50-1:200

Validations

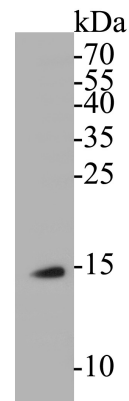


Fig1: Western blot analysis of BLOS1 on rice tissue lysates. Proteins were transferred to a PVDF membrane and blocked with 5% BSA in PBS for 1 hour at room temperature. The primary antibody (1/500) was used in 5% BSA at room temperature for 2 hours. Goat Anti-Rabbit IgG - HRP Secondary Antibody (HA1001) at 1:5,000 dilution was used for 1 hour at room temperature.

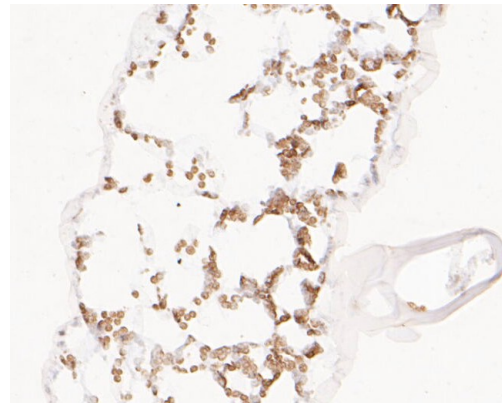


Fig2: Immunohistochemical analysis of paraffin-embedded A. thaliana tissue using anti-BLOS1 antibody. The section was pre-treated using heat mediated antigen retrieval with Tris-EDTA buffer (pH 8.0-8.4) for 20 minutes. The tissues were blocked in 5% BSA for 30 minutes at room temperature, washed with ddH₂O and PBS, and then probed with the primary antibody (1/50) for 30 minutes at room temperature. The detection was performed using an HRP conjugated compact polymer system. DAB was used as the chromogen. Tissues were counterstained with hematoxylin and mounted with DPX.