

Anti-TMEM248 antibody



Catalog Number: 175131

Product name

Anti-TMEM248 antibody

Specificity

Human, Mouse, Rat

Antibody description

Rabbit polyclonal antibody to TMEM248

Preparation

This antigen of this antibody was synthetic peptide corresponding to c-terminal human tmem248.

Formulation

Liquid, 1*PBS (pH7.4), 0.2% BSA, 50% Glycerol.
Preservative: 0.05% Sodium Azide.

Storage

Store at +4°C after thawing. Aliquot store at -20°C. Avoid repeated freeze / thaw cycles.

Clonality

Polyclonal

Ig Type

Rabbit IgG

Applications

WB, ICC, FC

Dilutions

WB: 1:500-1,000

ICC: 1:50-1:200

FC: 1:50-1:100

Validations

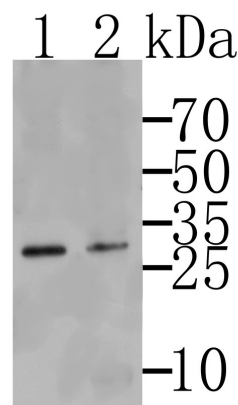
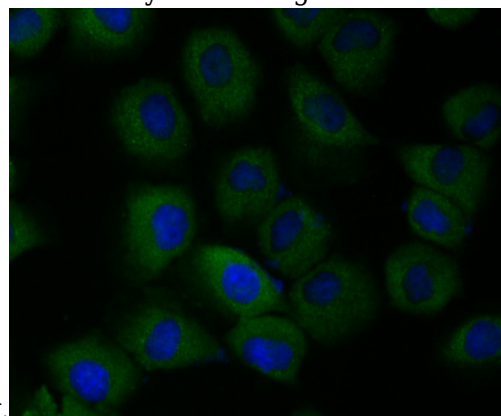


Fig1: Western blot analysis of Tmem248 on SkBr3 (1) and K562 cells lysates using anti-Tmem248 antibody.



antibody.

Fig2: ICC staining Tmem248 in HUVEC cells (green). The nuclear counter stain is DAPI (blue). Cells were fixed in paraformaldehyde, permeabilised with 0.25% Triton X100/PBS.

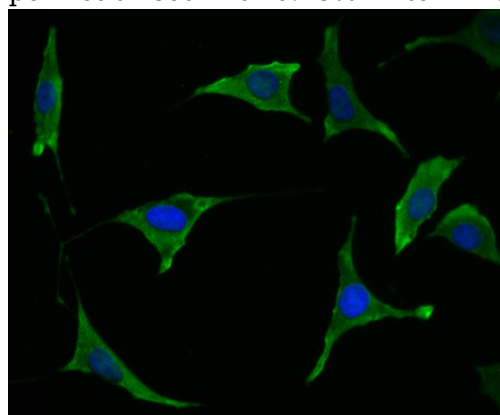


Fig3: ICC staining Tmem248 in SH-SY-5Y cells (green). The nuclear counter stain is DAPI (blue). Cells were fixed in paraformaldehyde, permeabilised with 0.25% Triton X100/PBS.

Anti-TMEM248 antibody

Catalog Number: 175131

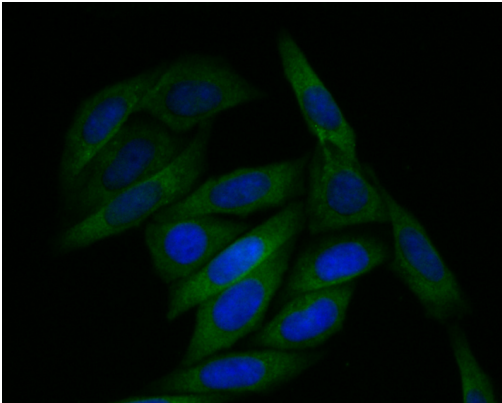


Fig4: ICC staining Tmem248 in SiHa cells (green). The nuclear counter stain is DAPI (blue). Cells were fixed in paraformaldehyde, permeabilised with 0.25% Triton X100/PBS.

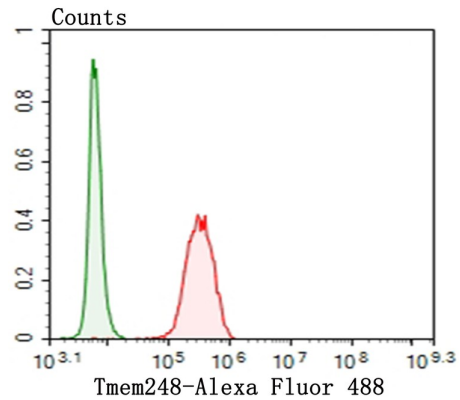


Fig5: Flow cytometric analysis of SH-SY-5Y cells with Tmem248 antibody at 1/100 dilution (red) compared with an unlabelled control (cells without incubation with primary antibody; green). Alexa Fluor 488-conjugated goat anti-rabbit IgG was used as the secondary antibody.