

Anti-ATRAID antibody



Catalog Number: 175130

Product name

Anti-ATRAID antibody

Specificity

Human, Mouse, Rat

Antibody description

Rabbit polyclonal antibody to ATRAID

Preparation

This antigen of this antibody was synthetic peptide corresponding to mouse apr3 c terminal.

Formulation

Liquid, 1*PBS (pH7.4), 0.2% BSA, 50% Glycerol.
Preservative: 0.05% Sodium Azide.

Storage

Store at +4°C after thawing. Aliquot store at -20°C. Avoid repeated freeze / thaw cycles.

Clonality

Polyclonal

Ig Type

Rabbit IgG

Applications

WB, ICC, IHC-P, FC

Dilutions

WB: 1:500-2,000

ICC: 1:50-1:200

IHC-P: 1:50-1:200

FC: 1:50-1:100

Validations

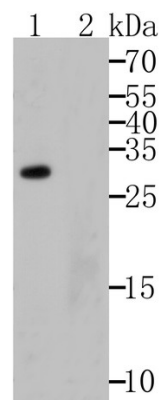


Fig1: Western blot analysis of APR3 on human skin tissue lysates using anti-APR3 antibody.; Lane 1: Anti-APR3 antibody (1/500).; Lane 2: Anti-APR3 antibody, pre-incubated with the immunization peptide.

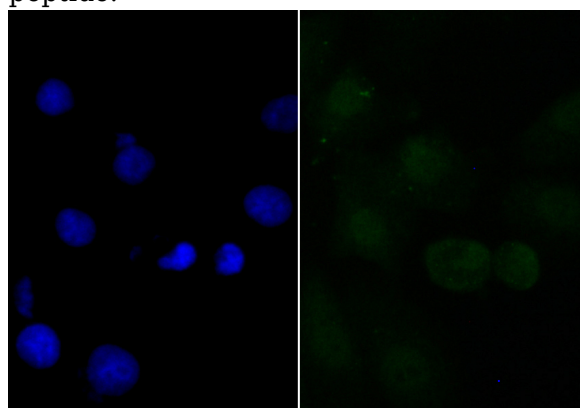


Fig2: ICC staining APR3 in A549 cells (green). The nuclear counter stain is DAPI (blue). Cells were fixed in paraformaldehyde, permeabilised with 0.25% Triton X100/PBS.

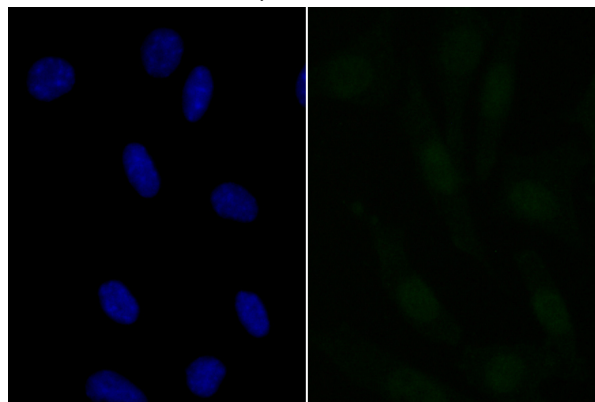


Fig3: ICC staining APR3 in SH-SY-5Y cells (green). The nuclear counter stain is DAPI (blue). Cells were fixed in paraformaldehyde, permeabilised with 0.25% Triton X100/PBS.

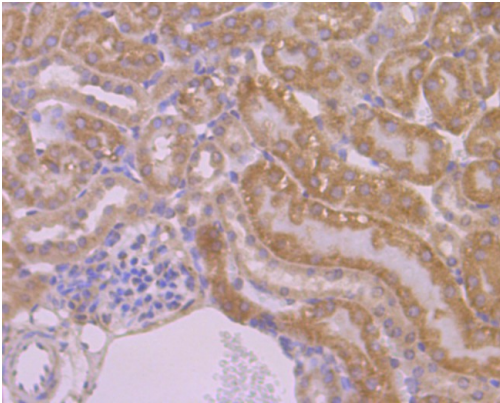


Fig4: Immunohistochemical analysis of paraffin-embedded mouse liver tissue using anti-APR3 antibody. Counter stained with hematoxylin.

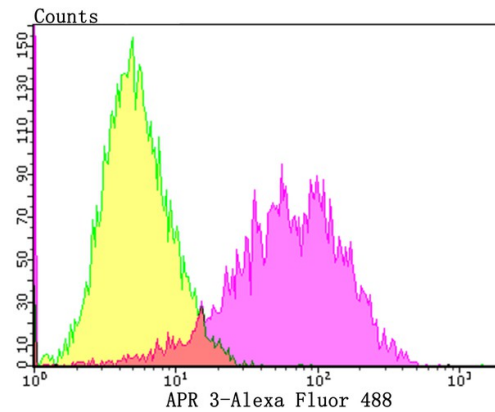


Fig5: Flow cytometric analysis of MCF-7 cells with APR3 antibody at 1/100 dilution (Pink purple) compared with an unlabelled control (cells without incubation with primary antibody; Yellow). Alexa Fluor 488-conjugated goat anti-rabbit IgG was used as the secondary antibody.