

Anti-NLRC3 antibody



Catalog Number: 175112

Product name

Anti-NLRC3 antibody

Specificity

Human, Mouse

Antibody description

Rabbit polyclonal antibody to NLRC3

Preparation

This antigen of this antibody was peptide.

Formulation

Liquid, 1*PBS (pH7.4), 0.2% BSA, 50% Glycerol.
Preservative: 0.05% Sodium Azide.

Storage

Store at +4°C after thawing. Aliquot store at -20°C or -80°C. Avoid repeated freeze / thaw cycles.

Clonality

Polyclonal

Ig Type

Rabbit IgG

Applications

ICC, IHC-P, FC

Dilutions

ICC: 1:50-1:200

IHC-P: 1:50-1:200

FC: 1:50-1:100

Validations

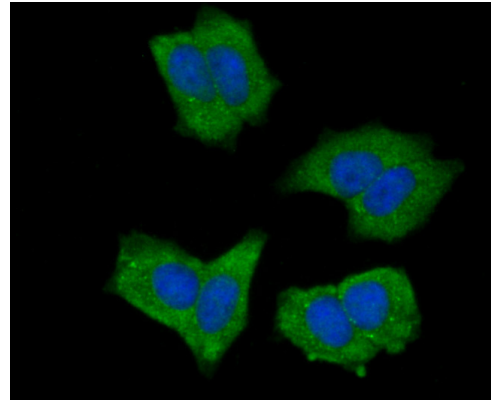


Fig1: ICC staining NLRC3 in MCF-7 cells (green). The nuclear counter stain is DAPI (blue). Cells were fixed in paraformaldehyde, permeabilised with 0.25% Triton X100/PBS.

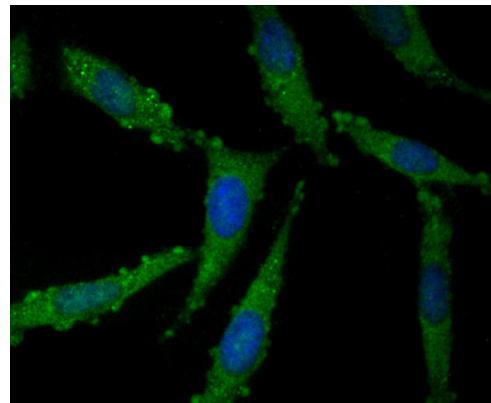


Fig2: ICC staining NLRC3 in SH-SY5Y cells (green). The nuclear counter stain is DAPI (blue). Cells were fixed in paraformaldehyde, permeabilised with 0.25% Triton X100/PBS.

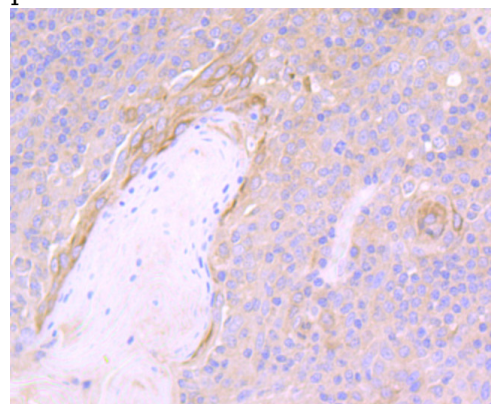


Fig3: Immunohistochemical analysis of paraffin-embedded human tonsil tissue using anti-NLRC3 antibody. Counter stained with hematoxylin.

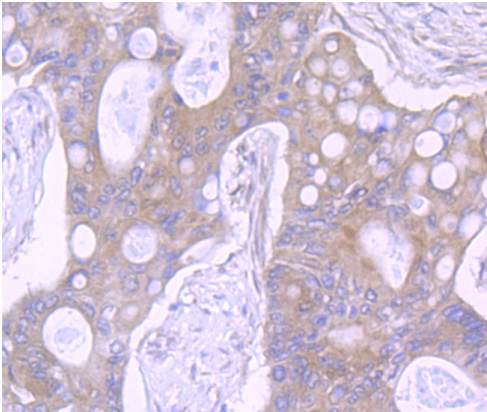


Fig4: Immunohistochemical analysis of paraffin-embedded human colon cancer tissue using anti-NLRC3 antibody. Counter stained with

hematoxylin.

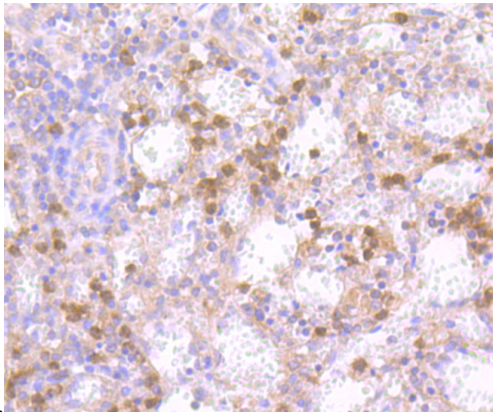


Fig5: Immunohistochemical analysis of paraffin-embedded human spleen tissue using anti-NLRC3 antibody. Counter stained with hematoxylin.

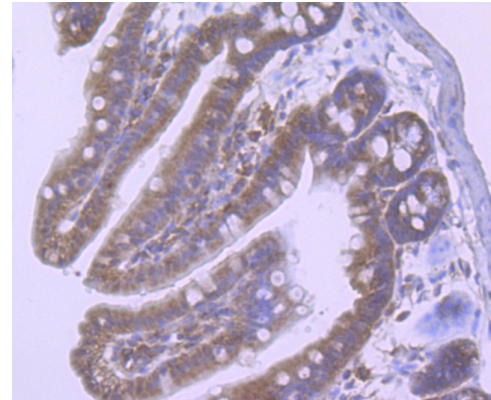


Fig6: Immunohistochemical analysis of paraffin-embedded mouse colon tissue using anti-NLRC3 antibody. Counter stained with hematoxylin.

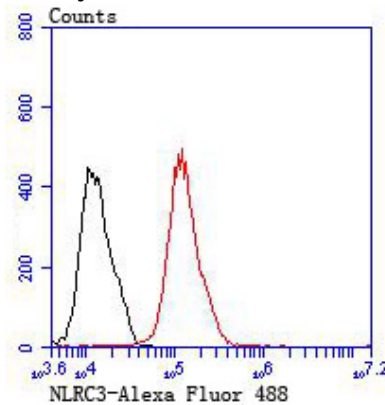


Fig7: Flow cytometric analysis of MCF-7 cells with NLRC3 antibody at 1/100 dilution (red) compared with an unlabelled control (cells without incubation with primary antibody; black).