

# Anti-TGM6 antibody



Catalog Number: 175104

## Product name

Anti-TGM6 antibody

## Specificity

Human, Mouse, Rat

## Antibody description

Rabbit polyclonal antibody to TGM6

## Preparation

This antigen of this antibody was peptide

## Formulation

Liquid, 1\*PBS (pH7.4), 0.2% BSA, 50% Glycerol.  
Preservative: 0.05% Sodium Azide.

## Storage

Store at +4°C after thawing. Aliquot store at -20°C or -80°C. Avoid repeated freeze / thaw cycles.

## Clonality

Polyclonal

## Ig Type

Rabbit IgG

## Applications

WB, ICC, IHC-P, FC

## Dilutions

WB:1:500

ICC: 1:50-1:200

IHC-P: 1:50-1:200

FC: 1:50-1:100

## Validations

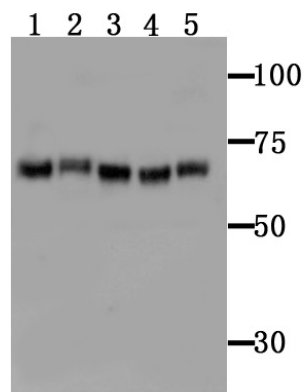


Fig1: Western blot analysis of TGM6 on different tissue lysates using anti-TGM6 antibody at 1/100 dilution.; Positive control; Lane 1 : Mouse brain; Lane 2 : Mouse brain; Lane 3 : Mouse spleen; Lane 4 : Mouse spleen; Lane 5 : Mouse testis

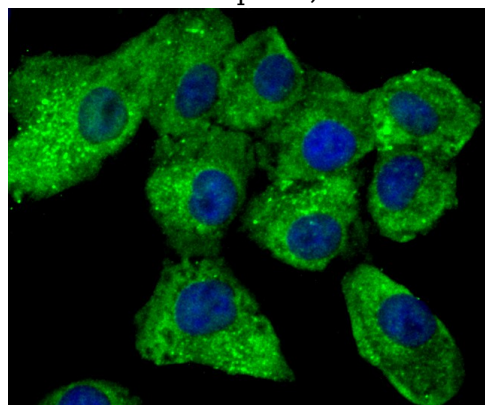


Fig2: ICC staining TGM6 in A549 cells (green). The nuclear counter stain is DAPI (blue). Cells were fixed in paraformaldehyde, permeabilised with 0.25% Triton X100/PBS.

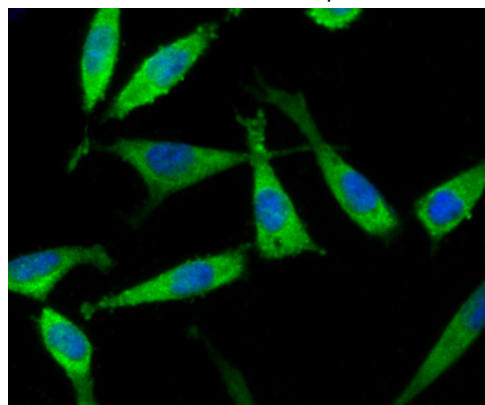


Fig3: ICC staining TGM6 in SH-SY5Y cells (green). The nuclear counter stain is DAPI (blue). Cells were fixed in paraformaldehyde, permeabilised with 0.25% Triton X100/PBS.

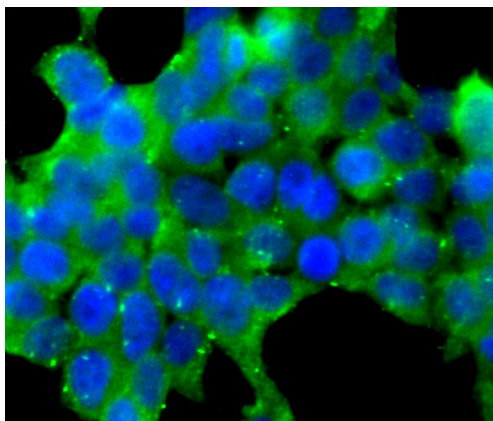


Fig4: ICC staining TGM6 in 293T cells (green). The nuclear counter stain is DAPI (blue). Cells were fixed in paraformaldehyde, permeabilised with 0.25% Triton X100/PBS.

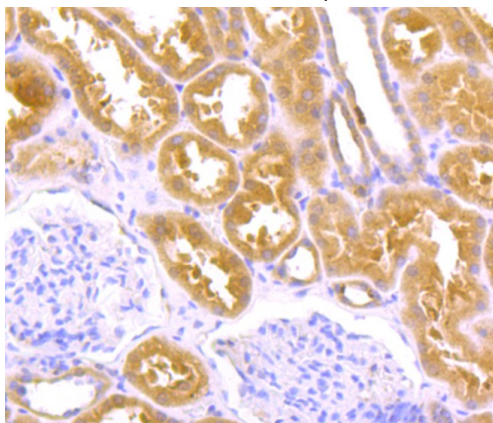


Fig5: Immunohistochemical analysis of paraffin-embedded human kidney tissue using anti-TGM6 antibody. Counter stained with hematoxylin.

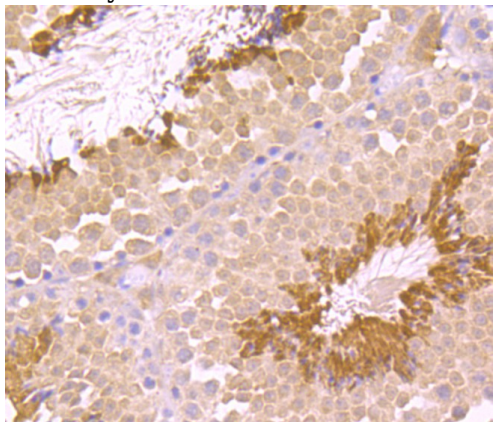


Fig6: Immunohistochemical analysis of paraffin-embedded mouse testis tissue using anti-TGM6 antibody. Counter stained with hematoxylin.

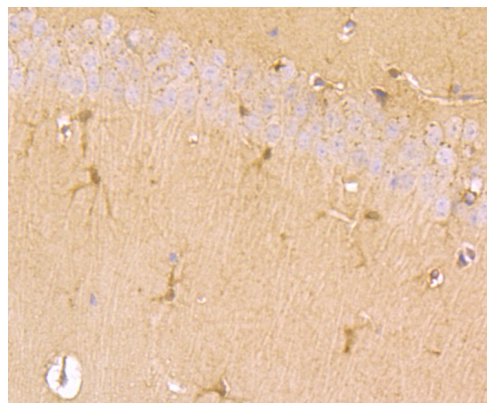


Fig7: Immunohistochemical analysis of paraffin-embedded mouse brain tissue using anti-TGM6 antibody. Counter stained with hematoxylin.

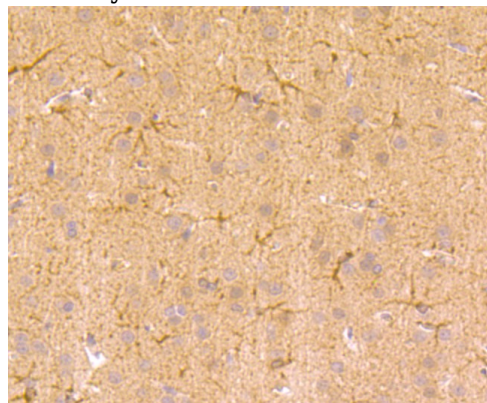


Fig8: Immunohistochemical analysis of paraffin-embedded rat brain tissue using anti-TGM6 antibody. Counter stained with hematoxylin.

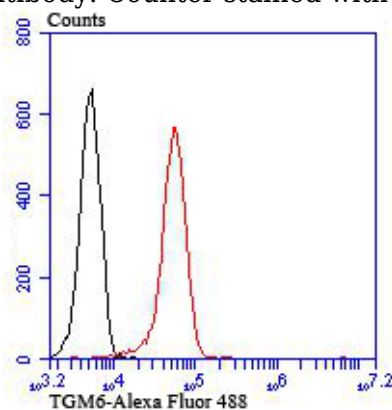


Fig9: Flow cytometric analysis of 293T cells with TGM6 antibody at 1/100 dilution (red) compared with an unlabelled control (cells without incubation with primary antibody; black). Alexa Fluor 488-conjugated Goat anti rabbit IgG was used as the secondary