

Anti-CLEC4F antibody



Catalog Number: 175086

Product name

Anti-CLEC4F antibody

Specificity

Human

Antibody description

Mouse monoclonal antibody to CLEC4F

Preparation

This antigen of this antibody was recombinant protein within human clec4f aa 90-500.

Formulation

Liquid, 1*PBS (pH7.4), 0.2% BSA, 50% Glycerol.
Preservative: 0.05% Sodium Azide.

Storage

Store at +4°C after thawing. Aliquot store at -20°C. Avoid repeated freeze / thaw cycles.

Clonality

Monoclonal

Ig Type

Mouse IgG1

Applications

WB, FC

Dilutions

WB:1:500-1:2,000

FC:1:50-1:100

Validations

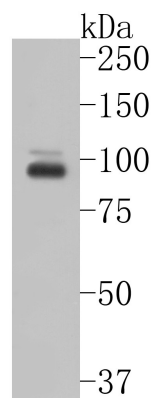


Fig1:; Western blot analysis of CLEC4F on SH-SY5Y cell lysates. Proteins were transferred to a PVDF membrane and blocked with 5% BSA in PBS for 1 hour at room temperature. The primary antibody (1/500) was used in 5% BSA at room temperature for 2 hours. Goat Anti-Mouse IgG - HRP Secondary Antibody (HA1006) at 1:5,000 dilution was used for 1 hour at room temperature.

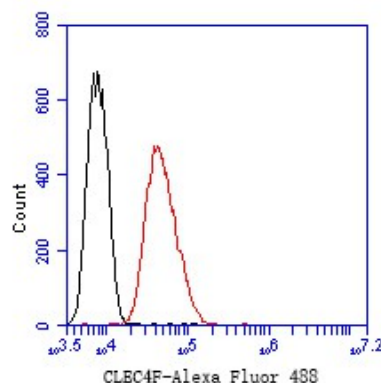


Fig2:; Flow cytometric analysis of CLEC4F was done on SH-SY5Y cells. The cells were fixed, permeabilized and stained with the primary antibody (1/50) (red). After incubation of the primary antibody at room temperature for an hour, the cells were stained with a Alexa Fluor 488-conjugated Goat anti-Mouse IgG Secondary antibody at 1/1000 dilution for 30 minutes. Unlabelled sample was used as a control (cells without incubation with primary antibody; black).