

# Anti-KLHL22 antibody



Catalog Number: 175064

## Product name

Anti-KLHL22 antibody

## Specificity

Human, Mouse

## Antibody description

Mouse monoclonal antibody to KLHL22

## Preparation

This antigen of this antibody was recombinant protein

## Formulation

Liquid, 1\*TBS (pH7.4), 1%BSA, Preservative: 0.05% Sodium Azide.

## Storage

Store at +4°C after thawing. Aliquot store at -20°C or -80°C. Avoid repeated freeze / thaw cycles.

## Clonality

Monoclonal

## Ig Type

Mouse IgG1

## Applications

WB, ICC

## Dilutions

WB: 1:500

ICC: 1:100-1:500

## Validations

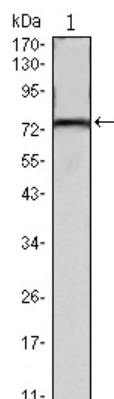
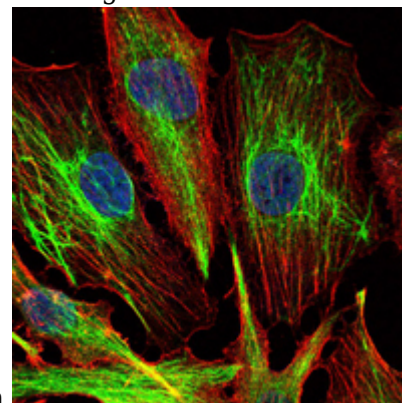


Fig1: Western blot analysis of KLHL22 on mouse brain tissue lysate using anti-KLHL22 antibody at



1/1,000 dilution.

Fig2: ICC staining KLHL22 (green) and actin filaments (red) in U251 cells. The nuclear counter stain is DAPI (blue). Cells were fixed in paraformaldehyde, permeabilised with 0.25% Triton X100/PBS.