

# Anti-TUBA8 antibody

Catalog Number: 175060

## Product name

Anti-TUBA8 antibody

## Specificity

Human, Rat

## Antibody description

Mouse monoclonal antibody to TUBA8

## Preparation

This antigen of this antibody was recombinant protein

## Formulation

Liquid, 1\*TBS (pH7.4), 1%BSA, Preservative: 0.05% Sodium Azide.

## Storage

Store at +4°C after thawing. Aliquot store at -20°C or -80°C. Avoid repeated freeze / thaw cycles.

## Clonality

Monoclonal

## Ig Type

Mouse IgG2b

## Applications

WB, ICC, IHC-P, FC

## Dilutions

WB: 1:500-1:2,000

ICC: 1:100-1:500

IHC-P: 1:100-1:500

FC: 1:100-1:200

## Validations

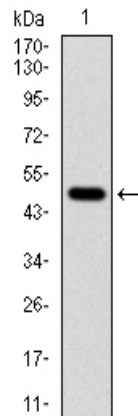
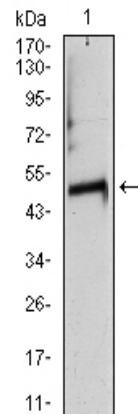
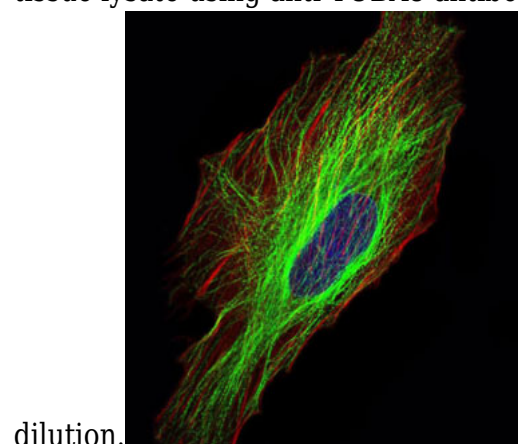


Fig1: Western blot analysis of TUBA8 on human TUBA8 recombinant protein using anti-TUBA8



antibody at 1/1,000 dilution.

Fig2: Western blot analysis of TUBA8 on heart tissue lysate using anti-TUBA8 antibody at 1/1,000



dilution.

Fig3: ICC staining TUBA8 (green) and actin filaments (red) in HeLa cells. The nuclear counter stain is DAPI (blue). Cells were fixed in paraformaldehyde, permeabilized with 0.25% Triton X100/PBS.

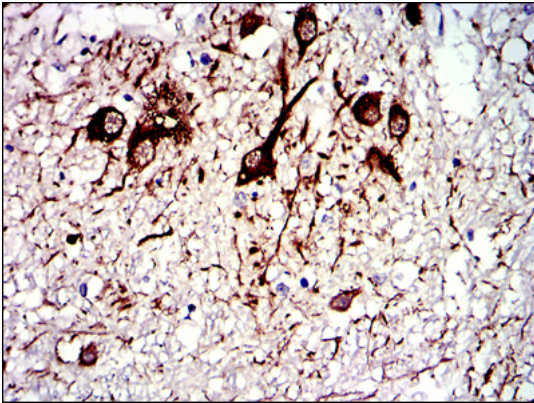


Fig4: Immunohistochemical analysis of paraffin-embedded medulla oblongata tissues using anti-TUBA8 antibody. Counter stained with hematoxylin.

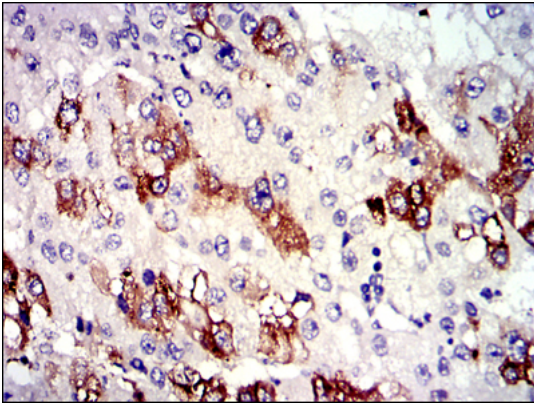


Fig5: Immunohistochemical analysis of paraffin-embedded liver cancer tissues using anti-TUBA8 antibody. Counter stained with hematoxylin.

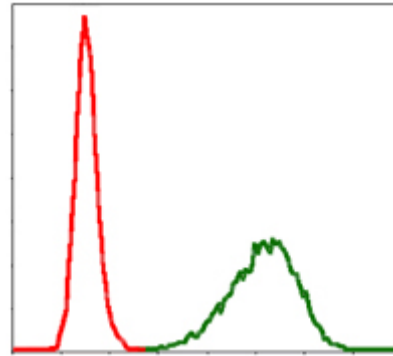


Fig6: Flow cytometric analysis of NIH/3T3 cells with TUBA8 antibody at 1/100 dilution (green) compared with an unlabelled control (cells without incubation with primary antibody; red).