

# Anti-NELFA antibody



Catalog Number: 175055

## Product name

Anti-NELFA antibody

## Specificity

Human, Rat

## Antibody description

Mouse monoclonal antibody to NELFA

## Preparation

This antigen of this antibody was recombinant protein

## Formulation

Liquid, 1\*TBS (pH7.4), 1%BSA, 40%Glycerol.  
Preservative: 0.05% Sodium Azide.

## Storage

Store at +4°C after thawing. Aliquot store at -20°C or -80°C. Avoid repeated freeze / thaw cycles.

## Clonality

Monoclonal

## Ig Type

Mouse IgG2b

## Applications

WB, ICC, IHC-P, FC

## Dilutions

WB: 1:500-1:2,000

ICC: 1:50-1:200

IHC-P: 1:100-1:200

FC: 1:100-1:200

## Validations

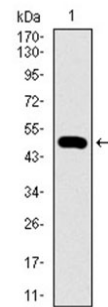


Fig1: Western blot analysis of WHSC2 on human WHSC2 recombinant protein using anti-WHSC2 antibody at 1/1,000 dilution.

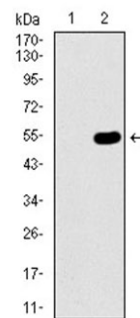
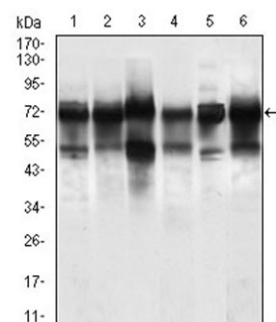


Fig2: Western blot analysis of WHSC2 on HEK293 (1) and WHSC2-hIgGFc transfected HEK293 (2) cell lysate using anti-WHSC2 antibody at 1/1,000



dilution.

Fig3: Western blot analysis of WHSC2 on different cell lysate using anti-WHSC2 antibody at 1/1,000 dilution.; Positive control.; Line1:Jurkat Line2:HeLa Line3:HEK293; Line4:Rat brain Line5:A549 Line6:SPC-A-1

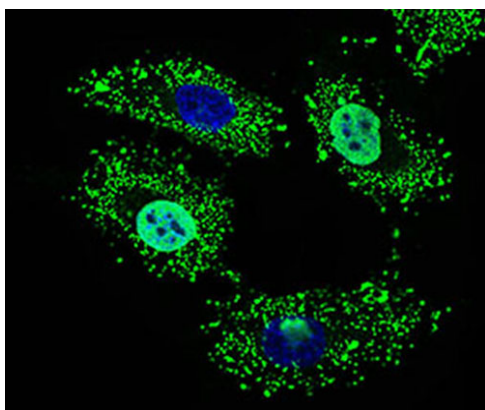


Fig4: ICC staining WHSC2 (green) in HeLa cells. The nuclear counter stain is DAPI (blue). Cells were fixed in paraformaldehyde, permeabilised with 0.25% Triton X100/PBS.

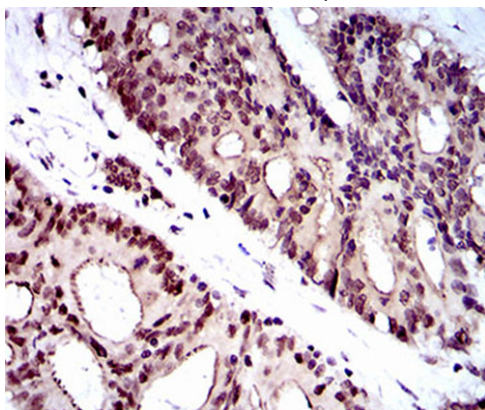
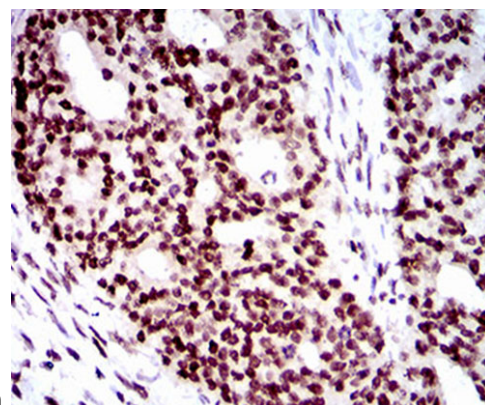
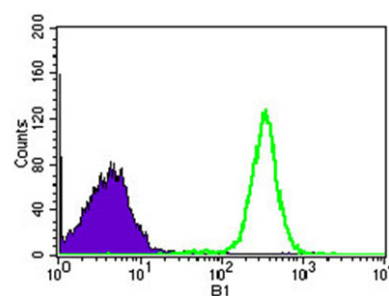


Fig5: Immunohistochemical analysis of paraffin-embedded human colon cancer tissue using anti-WHSC2 antibody. Counter stained with



hematoxylin.

Fig6: Immunohistochemical analysis of paraffin-embedded human ovarian cancer tissue using anti-WHSC2 antibody. Counter stained with



hematoxylin.

Fig7: Flow cytometric analysis of HEK293 cells with WHSC2 antibody at 1/100 dilution (green) compared with an unlabelled control (cells without incubation with primary antibody; purple).