

# Anti-ZFP91 antibody



Catalog Number: 175050

## Product name

Anti-ZFP91 antibody

## Specificity

Human

## Antibody description

Mouse monoclonal antibody to ZFP91

## Preparation

This antigen of this antibody was recombinant protein

## Formulation

Liquid, 1\*TBS (pH7.4), 1%BSA, 40%Glycerol.  
Preservative: 0.05% Sodium Azide.

## Storage

Store at +4°C after thawing. Aliquot store at -20°C or -80°C. Avoid repeated freeze / thaw cycles.

## Clonality

Monoclonal

## Ig Type

Mouse IgG1

## Applications

WB, ICC, IHC-P, FC

## Dilutions

WB: 1:500-1:2,000

ICC: 1:100-1:200

IHC-P: 1:100-1:500

FC: 1:50-1:200

## Validations

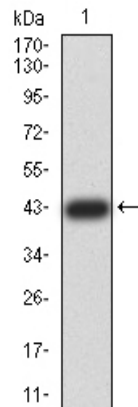
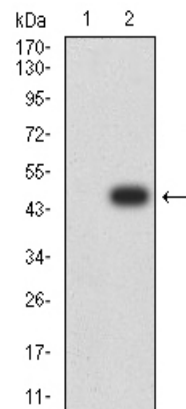
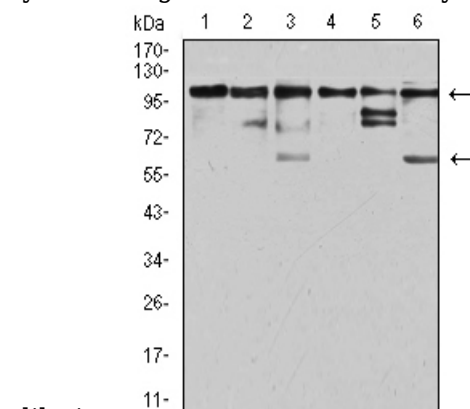


Fig1: Western blot analysis of ZFP91 on human ZFP91 recombinant protein using anti-ZFP91



antibody at 1/1,000 dilution.

Fig2: Western blot analysis of ZFP91 on HEK293 (1) and ZFP91-hIgGfc transfected HEK293 (2) cell lysate using anti-ZFP91 antibody at 1/1,000



dilution.

Fig3: Western blot analysis of ZFP91 on different cell lysate using anti-ZFP91 antibody at 1/1,000 dilution.; Positive control.; Lane 1: Jurkat; Lane 2: A431; Lane 3: HepG2; Lane 4: HEK293; Lane 5: A549; Lane 6: PC-3

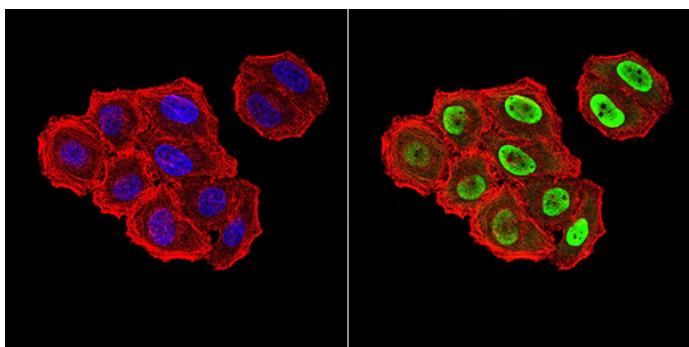


Fig4: ICC staining ZFP91 (green) and Actin filaments (red) in HeLa cells. The nuclear counter stain is DAPI (blue). Cells were fixed in paraformaldehyde, permeabilised with 0.25% Triton X100/PBS.

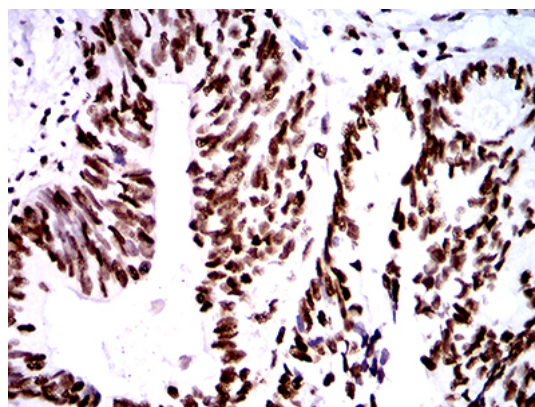


Fig6: Immunohistochemical analysis of paraffin-embedded human rectum cancer tissue using anti-ZFP91 antibody. Counter stained with hematoxylin.

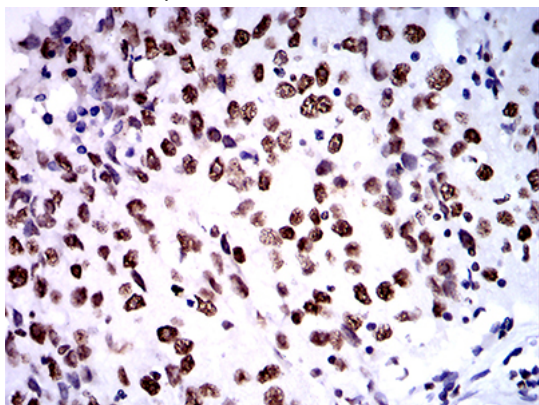


Fig5: Immunohistochemical analysis of paraffin-embedded human ovarian cancer tissue using anti-ZFP91 antibody. Counter stained with hematoxylin.

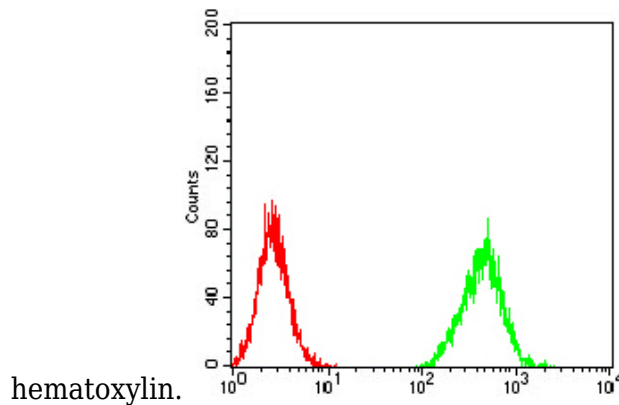


Fig7: Flow cytometric analysis of HeLa cells with ZFP91 antibody at 1/100 dilution (green) compared with an unlabelled control (cells without incubation with primary antibody; red).