

# Anti-TGG2 antibody



Catalog Number: 175034

## Product name

Anti-TGG2 antibody

## Specificity

*Arabidopsis thaliana*

## Antibody description

Mouse monoclonal antibody to TGG2

## Preparation

This antigen of this antibody was synthetic peptide within *Arabidopsis thaliana* aa 350-400.

## Formulation

Liquid, 1\*PBS (pH7.4), 0.2% BSA, 50% Glycerol.  
Preservative: 0.05% Sodium Azide.

## Storage

Store at +4°C after thawing. Aliquot store at -20°C. Avoid repeated freeze / thaw cycles.

## Clonality

Monoclonal

## Ig Type

Mouse IgG1

## Applications

WB, IHC-P, IF

## Dilutions

WB: 1:500-1:2,000

IHC-P: 1:200

IF: 1:50-1:200

## Validations

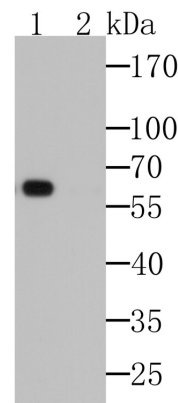


Fig1: Western blot analysis of TGG2 on *Arabidopsis thaliana* lysates.; Positive control.; Lane 1: Anti-TGG2 antibody, 1/1,000 dilution.; Lane 2: Anti-TGG2 antibody, preincubated with the control peptide antigen.

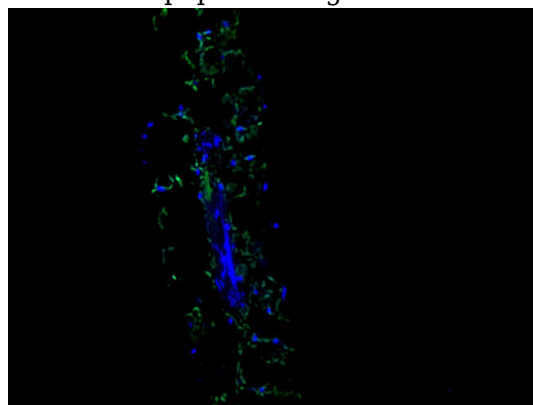


Fig2: IF staining TGG2 (green) in *Arabidopsis thaliana* (longitudinal section). The nuclear counter stain is DAPI (blue). Cells were fixed in paraformaldehyde, permeabilised with 0.25% Triton X100/PBS.

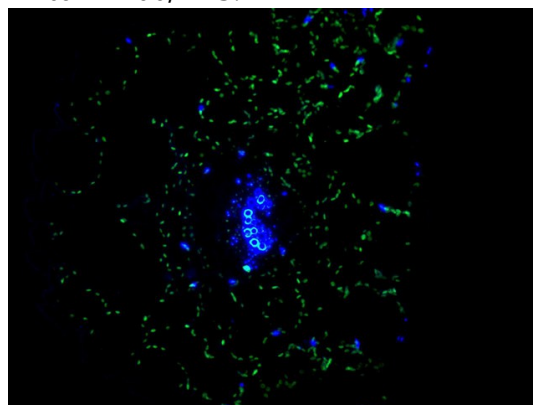


Fig3: IF staining TGG2 (green) in *Arabidopsis thaliana* (cross-section). The nuclear counter stain is DAPI (blue). Cells were fixed in

# Anti-TGG2 antibody

Catalog Number: 175034

---

paraformaldehyde, permeabilised with 0.25% Triton X100/PBS.

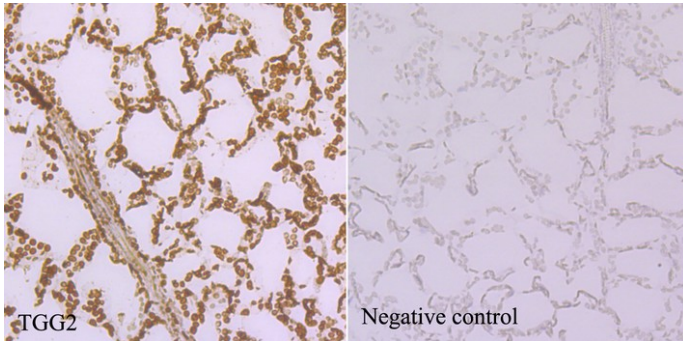


Fig4: Immunohistochemical analysis of paraffin-embedded *Arabidopsis thaliana* tissue using anti-TGG2 antibody. Counter stained with hematoxylin.