

Anti-PLEKHH1 antibody



Catalog Number: 175029

Product name

Anti-PLEKHH1 antibody

Specificity

Human, Mouse

Antibody description

Mouse monoclonal antibody to PLEKHH1

Preparation

This antigen of this antibody was recombinant protein

Formulation

Liquid, 1*PBS (pH7.4), 0.2% BSA, 50% Glycerol.
Preservative: 0.05% Sodium Azide.

Storage

Store at +4°C after thawing. Aliquot store at -20°C or -80°C. Avoid repeated freeze / thaw cycles.

Clonality

Monoclonal

Ig Type

Mouse IgG2b

Applications

WB, IHC-P, ICC

Dilutions

WB: 1:500

ICC: 1:50

IHC-P: 1:50-1:200

Validations

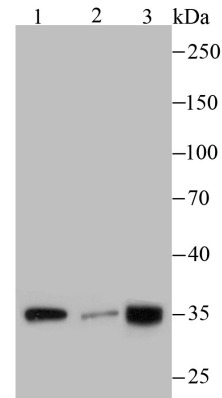


Fig1: Western blot analysis of PLEKHH1 on different cell lysates using anti-PLEKHH1 antibody at 1/100 dilution.; Positive control; Lane 1: MCF-7; Lane 2: A431; Lane 3: SH-SY5Y

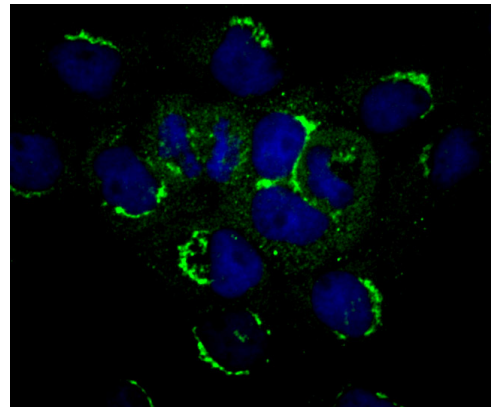


Fig2: ICC staining PLEKHH1 (green) in A431 cells. The nuclear counter stain is DAPI (blue). Cells were fixed in paraformaldehyde, permeabilised with 0.25% Triton X100/PBS.

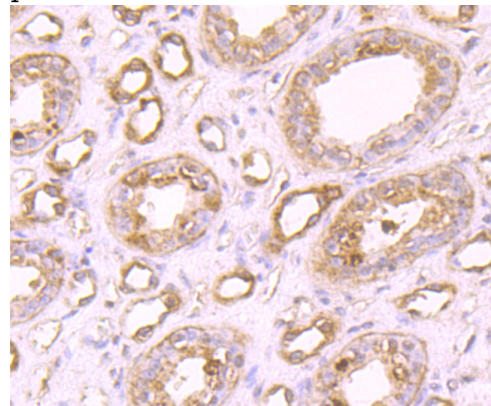


Fig3: Immunohistochemical analysis of paraffin-embedded human kidney tissue using anti-PLEKHH1 antibody. Counter stained with

Anti-**PLEKHH1** antibody

Catalog Number: 175029

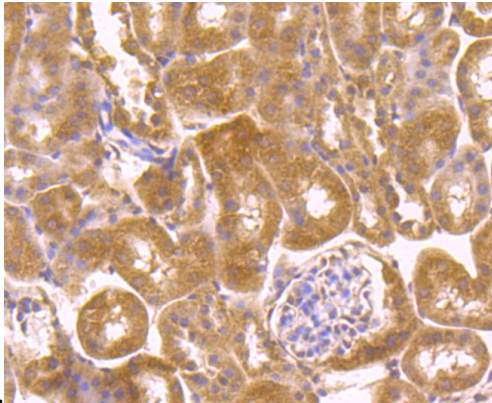


Fig4: Immunohistochemical analysis of paraffin-embedded mouse kidney tissue using anti-**PLEKHH1** antibody. Counter stained with hematoxylin.

hematoxylin.