

Anti-CEMIP2 antibody

Catalog Number: 175017

Product name

Anti-CEMIP2 antibody

Specificity

Human, Mouse, Rat

Antibody description

Rabbit polyclonal antibody to CEMIP2

Preparation

This antigen of this antibody was synthetic peptide within human transmembrane protein 2 aa 104-177.

Formulation

Liquid, 1*PBS (pH7.4), 0.2% BSA, 40% Glycerol.
Preservative: 0.05% Sodium Azide.

Storage

Store at +4°C after thawing. Aliquot store at -20°C. Avoid repeated freeze / thaw cycles.

Clonality

Polyclonal

Ig Type

Rabbit IgG

Applications

WB, IHC-P

Dilutions

WB: 1:1,000-1:2,000

IHC-P: 1:50-1:200

Validations

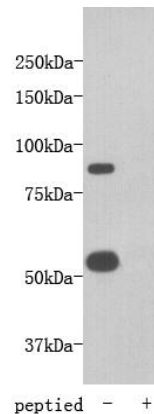


Fig1: Western blot analysis of TMEM2 on mouse heart tissue lysate using anti-TMEM2 antibody at 1/1,000 dilution.

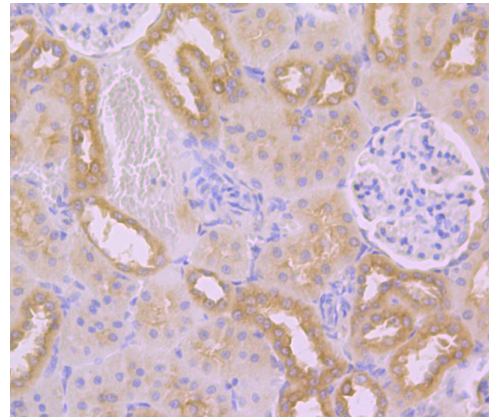


Fig2: Immunohistochemical analysis of paraffin-embedded rat kidney tissue using anti-TMEM2 antibody. Counter stained with hematoxylin.

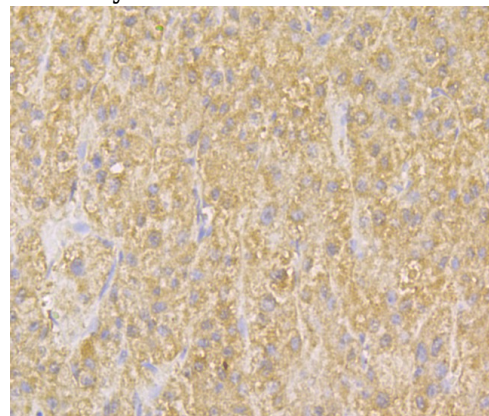


Fig3: Immunohistochemical analysis of paraffin-embedded human liver tissue using anti-TMEM2 antibody. Counter stained with hematoxylin.

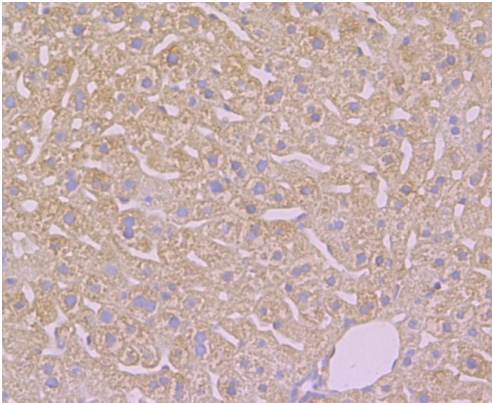


Fig4: Immunohistochemical analysis of paraffin-embedded mouse liver tissue using anti-TMEM2 antibody. Counter stained with hematoxylin.

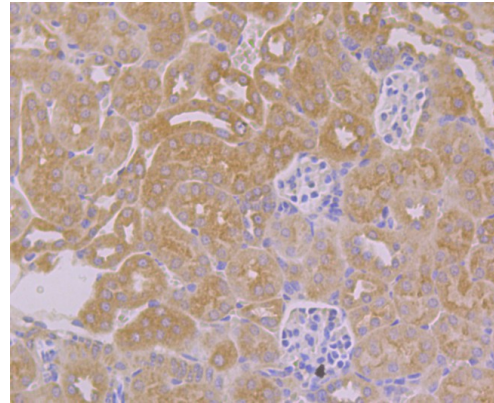


Fig5: Immunohistochemical analysis of paraffin-embedded mouse kidney tissue using anti-TMEM2 antibody. Counter stained with hematoxylin.