

Anti-Spp1 antibody



Catalog Number: 175006

Product name

Anti-Spp1 antibody

Specificity

Human, Rat, Mouse

Antibody description

Rabbit polyclonal antibody to Spp1

Preparation

This antigen of this antibody was synthetic peptide within c-terminal mouse osteopontin.

Formulation

Liquid, 1*PBS (pH7.4), 0.2% BSA, 40% Glycerol.
Preservative: 0.05% Sodium Azide.

Storage

Store at +4°C after thawing. Aliquot store at -20°C or -80°C. Avoid repeated freeze / thaw cycles.

Clonality

Polyclonal

Ig Type

Rabbit IgG

Applications

WB

Dilutions

WB: 1:500-1:2000

Validations

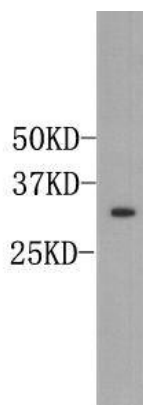


Fig1:: Western blot analysis of Osteopontin on mouse liver tissue lysate. Proteins were transferred to a PVDF membrane and blocked with 5% BSA in PBS for 1 hour at room temperature. The primary antibody (1/1000) was used in 5% BSA at room temperature for 2 hours. Goat Anti-Rabbit IgG - HRP Secondary Antibody (HA1001) at 1:5,000 dilution was used for 1 hour at room temperature.

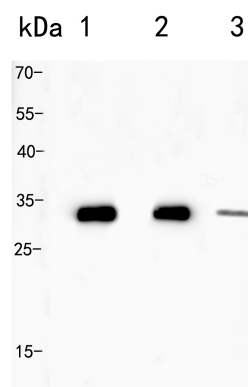


Fig2:: Western blot analysis of Osteopontin on different lysates. Proteins were transferred to a PVDF membrane and blocked with 5% BSA in PBS for 1 hour at room temperature. The primary antibody (1/2000) was used in 5% BSA at room temperature for 2 hours. Goat Anti-Rabbit IgG - HRP Secondary Antibody (HA1001) at 1:5,000 dilution was used for 1 hour at room temperature.; Positive control; Lane 1: Rat kidney tissue lysate; Lane 2: Mouse kidney tissue lysate; Lane 3: HepG2 cell lysate