

# Anti-Cd24a antibody



Catalog Number: 175004

## Product name

Anti-Cd24a antibody

## Specificity

Mouse, Human, Rat

## Antibody description

Rabbit polyclonal antibody to Cd24a

## Preparation

This antigen of this antibody was synthetic peptide within c-terminal mouse cd24.

## Formulation

Liquid, 1\*PBS (pH7.4), 0.2% BSA, 40% Glycerol.  
Preservative: 0.05% Sodium Azide.

## Storage

Store at +4°C after thawing. Aliquot store at -20°C or -80°C. Avoid repeated freeze / thaw cycles.

## Clonality

Polyclonal

## Ig Type

Rabbit IgG

## Applications

WB, IHC-P, FC

## Dilutions

WB: 1:500-1:2,000

IHC-P: 1:50-1:200

FC: 1:50-1:100

## Validations

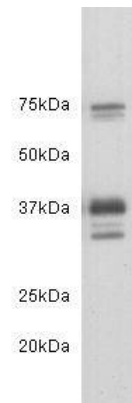


Fig1:: Western blot analysis of CD24 on mouse brain tissue lysates. Proteins were transferred to a PVDF membrane and blocked with 5% BSA in PBS for 1 hour at room temperature. The primary antibody ( 1/500) was used in 5% BSA at room temperature for 2 hours. Goat Anti-Rabbit IgG - HRP Secondary Antibody (HA1001) at 1:200,000 dilution was used for 1 hour at room temperature.

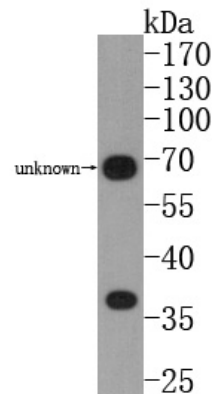


Fig2:: Western blot analysis of CD24 on mouse thymus tissue lysates. Proteins were transferred to a PVDF membrane and blocked with 5% BSA in PBS for 1 hour at room temperature. The primary antibody ( 1/1000) was used in 5% BSA at room temperature for 2 hours. Goat Anti-Rabbit IgG - HRP Secondary Antibody (HA1001) at 1:200,000 dilution was used for 1 hour at room temperature.

# Anti-Cd24a antibody

Catalog Number: 175004

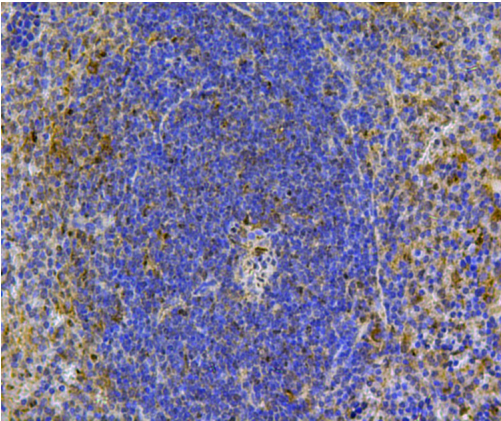


Fig3.; Immunohistochemical analysis of paraffin-embedded mouse spleen tissue using anti-CD24 antibody. The section was pre-treated using heat mediated antigen retrieval with Tris-EDTA buffer (pH 8.0-8.4) for 20 minutes. The tissues were blocked in 5% BSA for 30 minutes at room temperature, washed with ddH<sub>2</sub>O and PBS, and then probed with the primary antibody (1/50) for 30 minutes at room temperature. The detection was performed using an HRP conjugated compact polymer system. DAB was used as the chromogen.

Tissues were counterstained with hematoxylin and mounted with DPX.

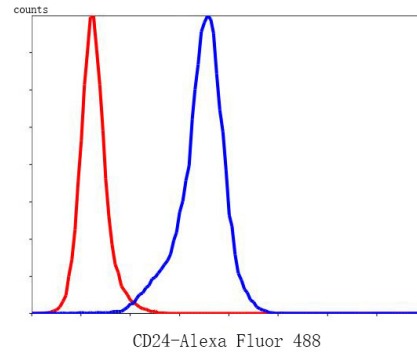


Fig4.; Flow cytometric analysis of CD24 was done on N2A cells. The cells were fixed, permeabilized and stained with the primary antibody (1/50) (blue). After incubation of the primary antibody at room temperature for an hour, the cells were stained with a Alexa Fluor 488-conjugated Goat anti-Rabbit IgG Secondary antibody at 1/1000 dilution for 30 minutes. Unlabelled sample was used as a control (cells without incubation with primary antibody; red).