

# Anti-SOCS1 Rabbit antibody



Catalog Number: 169095

## General Information

### Product name:

Anti-SOCS1 Rabbit antibody

### Immunogen:

### Applications:

ICC/IF, WB, IHC-P, ELISA

### Specificity:

Human, Mouse, Rat

### Antibody description:

SOCS1 Rabbit polyclonal antibody

## Properties

### Preparation:

Antigen: The antiserum was produced against synthesized peptide derived from human SOCS-1. AA range:49-98

### Formulation:

Liquid in PBS containing 50% glycerol, 0.5% BSA and 0.02% sodium azide.

### Storage:

Store at 4°C short term. Store at -20°C long term. Avoid freeze / thaw cycle.

### Clonality:

Polyclonal antibody

### Ig Type:IgG

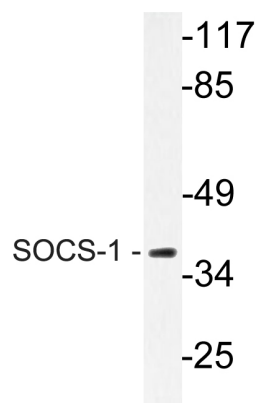
## Applications

IF: 1/50-200

WB: 1/500-2000; ELISA 1/10000-20000

IHC: 1/50-300

## Validations



Western Blot analysis of Jurkat cell lysate using SOCS-1 Polyclonal Antibody