

Anti-Lamin B1 Rabbit antibody



Catalog Number: 169084

General Information

Product name:

Anti-Lamin B1 Rabbit antibody

Immunogen:

Applications:

ICC/IF, WB, IHC-P, ELISA

Specificity:

Human, Mouse, Rat

Antibody description:

Lamin B1 Rabbit polyclonal antibody

Properties

Preparation:

Antigen: The antiserum was produced against synthesized peptide derived from human Lamin B1. AA range:26-75

Formulation:

Liquid in PBS containing 50% glycerol, 0.5% BSA and 0.02% sodium azide.

Storage:

Store at 4°C short term. Store at -20°C long term. Avoid freeze / thaw cycle.

Clonality:

Polyclonal antibody

Ig Type: IgG

Applications

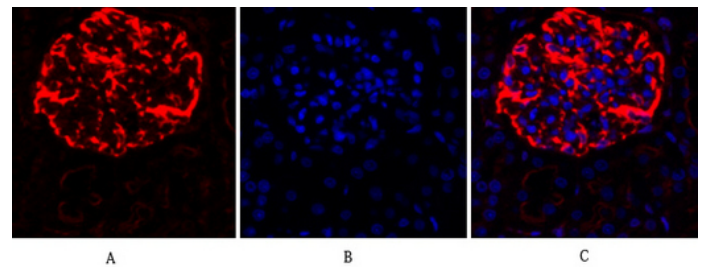
IF: 1/50-200

WB: 1/500 - 1/2000

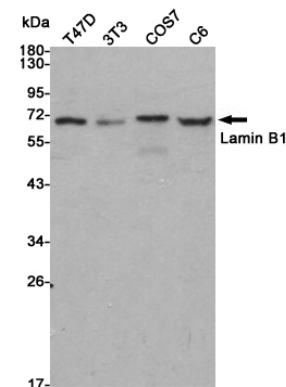
IHC: 1/100 - 1/300

ELISA: 1/40000

Validations



Immunofluorescence analysis of rat-kidney tissue. 1, Lamin B1 Polyclonal Antibody (red) was diluted at 1:200 (4°C, overnight). 2, Cy3 labeled Secondary antibody was diluted at 1:300 (room temperature, 50 min). 3, Picture B: DAPI (blue) 10 min. Picture A: Target. Picture B: DAPI. Picture C: merge of A+B

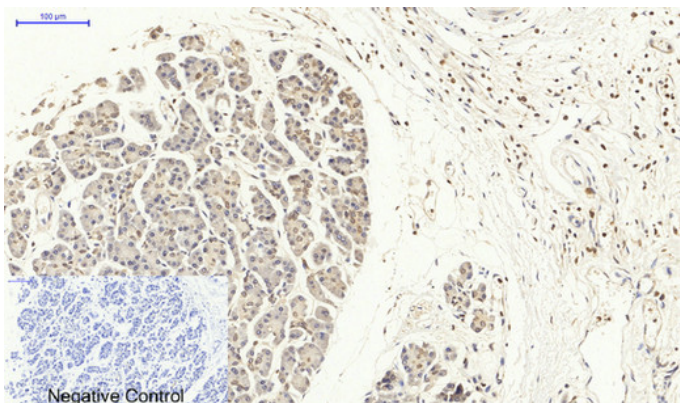


Western blot detection of Lamin B1 in T47D, 3T3, COS7 and C6 cell lysates using Lamin B1 rabbit pAb (1:20000 diluted). Predicted band size: 67 kDa. Observed band size: 68 kDa.

Anti-Lamin B1 Rabbit antibody



Catalog Number: 169084



Immunohistochemical analysis of paraffin-embedded Human-stomach-cancer tissue. 1, Lamin B1 Polyclonal Antibody was diluted at 1:200 (4°C, overnight). 2, Sodium citrate pH 6.0 was used for antibody retrieval (>98°C, 20min). 3, Secondary antibody was diluted at 1:200 (room temperature, 30min). Negative control was used by secondary antibody only.