

Anti-Phospho-FOXO3A (Ser235) Rabbit antibody



Catalog Number: 169074

General Information

Product name:

Anti-Phospho-FOXO3A (Ser235) Rabbit antibody

Immunogen:

Applications:

WB, IHC-P

Specificity:

Human, Mouse, Rat

Antibody description:

Phospho-FOXO3A (Ser235) Rabbit polyclonal antibody

Properties

Preparation:

Antigen: A synthesized peptide derived from human FoxO3a

Formulation:

Rabbit IgG in phosphate buffered saline , pH 7.4, 150mM NaCl, 0.02% sodium azide and 50% glycerol.

Storage:

Store at 4°C short term. Store at -20°C long term. Avoid freeze / thaw cycle.

Clonality:

Polyclonal antibody

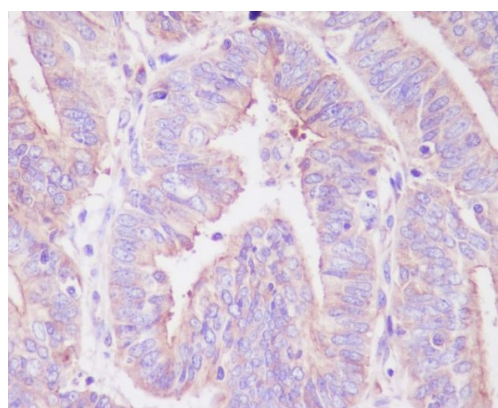
Ig Type:Rabbit IgG

Applications

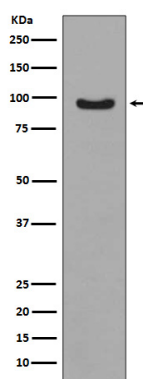
WB: 1/500-1/2000

IHC: 1/50-1/200

Validations



Immunohistochemical analysis of paraffin-embedded human uterus cancer, using Phospho-FoxO3a (S253) Antibody.



Western blot analysis of Phospho-FoxO3a (S253) expression in MCF-7 cell lysate treated with IGF.