

# Anti-N Cadherin Rabbit antibody



Catalog Number: 169072

## Product name

WB, IHC-P

Anti-N Cadherin Rabbit antibody

## Dilutions

## Specificity

WB: 1/500-1/2000

Human, Mouse, Rat

IHC: 1/50-1/200

## Antibody description

N Cadherin Rabbit polyclonal antibody

## Preparation

Antigen: A synthesized peptide derived from human N Cadherin

## Formulation

Rabbit IgG in phosphate buffered saline , pH 7.4, 150mM NaCl, 0.02% sodium azide and 50% glycerol.

## Storage

Store at 4°C short term. Store at -20°C long term. Avoid freeze / thaw cycle.

## Clonality

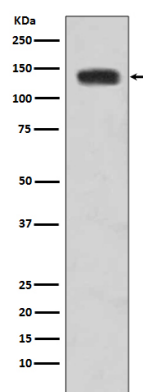
Polyclonal

## Ig Type

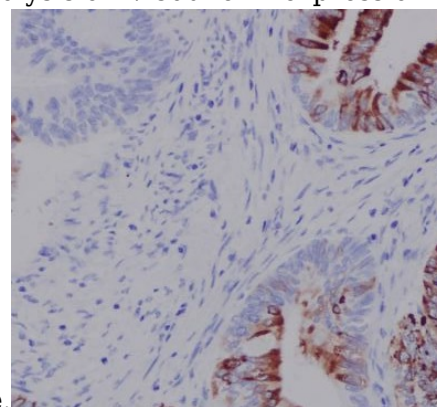
Rabbit IgG

## Applications

## Validations



Western blot analysis of N-Cadherin expression in



HeLa cell lysate.

Immunohistochemical analysis of paraffin-embedded human colon, using N Cadherin Antibody.