

Anti-beta Tubulin Rabbit antibody



Catalog Number: 169071

General Information

ICC/IF: 1/50-1/200

Product name:

FC: 1/100

Anti-beta Tubulin Rabbit antibody

Immunogen:

Applications:

WB, IHC-P, ICC/IF, FC

Specificity:

Human, Mouse, Rat

Antibody description:

beta Tubulin Rabbit polyclonal antibody

Properties

Preparation:

Antigen: A synthesized peptide derived from human beta Tubulin

Formulation:

Rabbit IgG in phosphate buffered saline , pH 7.4, 150mM NaCl, 0.02% sodium azide and 50% glycerol.

Storage:

Store at 4°C short term. Store at -20°C long term. Avoid freeze / thaw cycle.

Clonality:

Polyclonal antibody

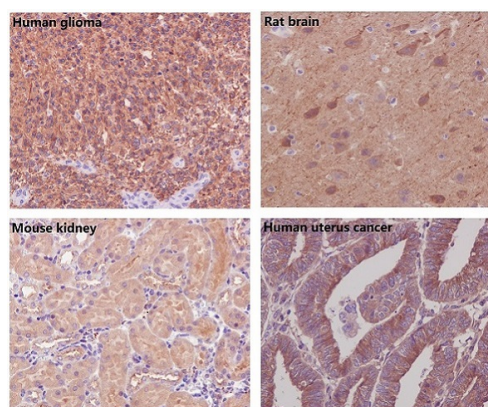
Ig Type:Rabbit IgG

Applications

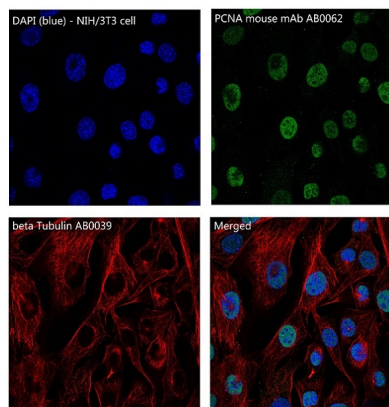
WB: 1/3000-1/10000

IHC: 1/50-1/200

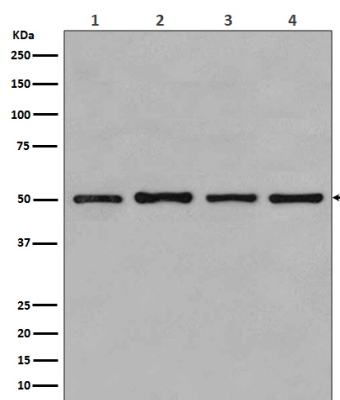
Validations



Immunohistochemical analysis of paraffin-embedded (1) Human glioma; (2) Rat brain; (3) Mouse kidney; (4) Human uterus cancer, using beta Tubulin Antibody.



Immunofluorescent analysis of NIH/3T3 cells, using beta Tubulin Antibody .



Anti-beta Tubulin Rabbit antibody



Catalog Number: 169071

Western blot analysis of beta Tubulin expression in (1) MCF-7 cell lysate; (2) COS-1 cell lysate; (3) Jurkat cell lysate; (4) HeLa cell lysate.