

Anti-Integrin beta 1 Rabbit antibody



Catalog Number: 169041

Product name

Anti-Integrin beta 1 Rabbit antibody

Ig Type

Rabbit IgG

Specificity

Human, Mouse, Rat

Applications

WB, FC

Antibody description

Integrin beta 1 Rabbit monoclonal antibody

Dilutions

1:1000

Preparation

Antigen: Recombinant protein of human Integrin beta 1

1:20

Validations

Formulation

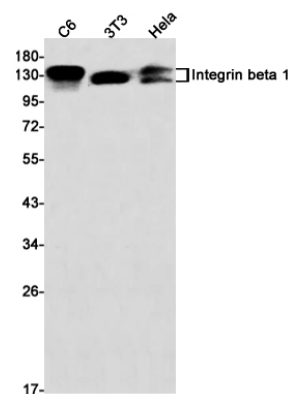
Supplied in 50nM Tris-Glycine(pH 7.4), 0.15M NaCl, 40%Glycerol, 0.01% sodium azide and 0.05% BSA.

Storage

Store at 4°C short term. Aliquot and store at -20°C long term. Avoid freeze / thaw cycle.

Clonality

Monoclonal



Western blot detection of Integrin beta 1 in C6,3T3,HeLa cell lysates using Integrin beta 1 Rabbit mAb(1:1000 diluted).Predicted band size:88kDa.Observed band size: 120-160kDa.