

# Anti-Cyclin H Rabbit antibody



Catalog Number: 169022

## Product name

Anti-Cyclin H Rabbit antibody

## Specificity

Human, Mouse, Rat

## Antibody description

Cyclin H Rabbit monoclonal antibody

## Preparation

Antigen: A synthetic peptide of human Cyclin H

## Formulation

50nM Tris-Glycine(pH 7.4), 0.15M NaCl, 40%Glycerol, 0.01% sodium azide and 0.05% BSA.

## Storage

Store at 4°C short term. Store at -20°C long term. Avoid freeze / thaw cycle.

## Clonality

Monoclonal

## Ig Type

Rabbit IgG

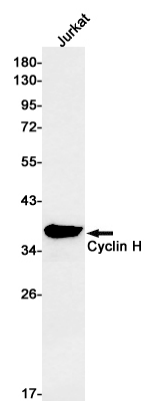
## Applications

WB

## Dilutions

WB: 1/1000-1/5000

## Validations



Western blot detection of Cyclin H in Jurkat cell lysates using Cyclin H Rabbit mAb(1:1000 diluted).Predicted band size:38kDa.Observed band size:36kDa.