

Anti-Myelin Basic Protein Rabbit antibody



Catalog Number: 169020

Product name

Anti-Myelin Basic Protein Rabbit antibody

Ig Type

Rabbit IgG

Specificity

Human, Mouse, Rat

Applications

WB

Antibody description

Myelin Basic Protein Rabbit monoclonal antibody

Dilutions

WB: 1/1000-1/5000

Preparation

Antigen: Recombinant protein of human Myelin Basic Protein

Formulation

50nM Tris-Glycine(pH 7.4), 0.15M NaCl, 40%Glycerol, 0.01% sodium azide and 0.05% BSA.

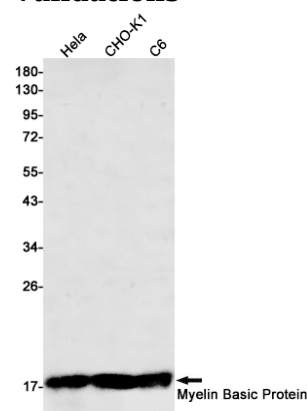
Storage

Store at 4°C short term. Store at -20°C long term. Avoid freeze / thaw cycle.

Clonality

Monoclonal

Validations



Western blot detection of Myelin Basic Protein in HeLa, CHO-K1, C6 cell lysates using Myelin Basic Protein Rabbit mAb(1:500 diluted). Predicted band size: 33kDa. Observed band size: 18kDa.