

Anti-Cullin 4A/CUL-4A+Cullin 4B/CUL-4B Rabbit antibody



Catalog Number: 168984

General Information

Product name:

Anti-Cullin 4A/CUL-4A+Cullin 4B/CUL-4B Rabbit antibody

Immunogen:

Applications:

WB, IHC-P, FC

Specificity:

Human, Mouse, Rat

Antibody description:

Cullin 4A/CUL-4A+Cullin 4B/CUL-4B Rabbit monoclonal antibody

Properties

Preparation:

Antigen: A synthetic peptide of human Cullin 4B

Formulation:

50nM Tris-Glycine(pH 7.4), 0.15M NaCl, 40%Glycerol, 0.01% sodium azide and 0.05% BSA.

Storage:

Store at 4°C short term. Store at -20°C long term. Avoid freeze / thaw cycle.

Clonality:

Monoclonal antibody

Ig Type:Rabbit IgG

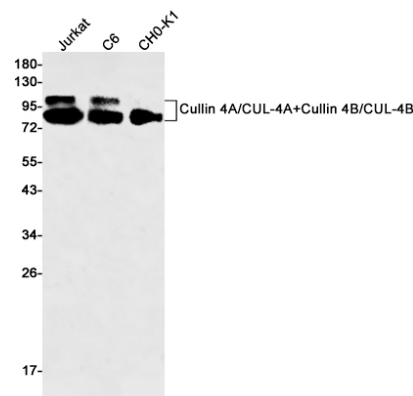
Applications

WB: 1/1000-1/5000

IHC: 1/20-1/50

FC: 1/20

Validations



Western blot detection of Cullin 4A/CUL-4A+Cullin 4B/CUL-4B in Jurkat,C6,CHO-K1 cell lysates using Cullin 4A/CUL-4A+Cullin 4B/CUL-4B Rabbit mAb(1:500 diluted).Predicted band size:88-104kDa.Observed band size:88-104kDa.