

Anti-S100A4 Rabbit antibody



Catalog Number: 168932

General Information

Product name:

Anti-S100A4 Rabbit antibody

Immunogen:

Applications:

WB, IHC-P, ICC/IF, FC, IP

Specificity:

Human

Antibody description:

S100A4 Rabbit monoclonal antibody

Properties

Preparation:

Antigen: A synthetic peptide of human S100A4

Formulation:

50nM Tris-Glycine(pH 7.4), 0.15M NaCl, 40%Glycerol, 0.01% sodium azide and 0.05% BSA.

Storage:

Store at 4°C short term. Store at -20°C long term. Avoid freeze / thaw cycle.

Clonality:

Monoclonal antibody

Ig Type:Rabbit IgG

Applications

WB: 1/1000-1/5000

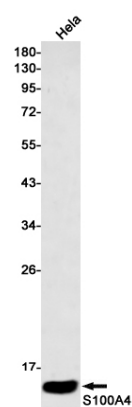
IHC: 1/50-1/200

ICC/IF: 1/20-1/50

FC: 1/20-1/100

IP: 1/20-1/50

Validations



Western blot detection of S100A4 in HeLa cell lysates using S100A4 Rabbit mAb(1:500 diluted).Predicted band size:12kDa.Observed band size:12kDa.