

Anti-RKIP Rabbit antibody



Catalog Number: 168928

Product name

Anti-RKIP Rabbit antibody

Specificity

Human, Mouse, Rat

Antibody description

RKIP Rabbit monoclonal antibody

Preparation

Antigen: A synthetic peptide of human RKIP

Formulation

Supplied in 50nM Tris-Glycine(pH 7.4), 0.15M NaCl, 40%Glycerol, 0.01% sodium azide and 0.05% BSA.

Storage

Store at 4°C short term. Aliquot and store at -20°C long term. Avoid freeze / thaw cycle.

Clonality

Monoclonal

Ig Type

Rabbit IgG

Applications

WB, IHC-P, ICC/IF, FC, IP

Dilutions

1:1000-1:2000

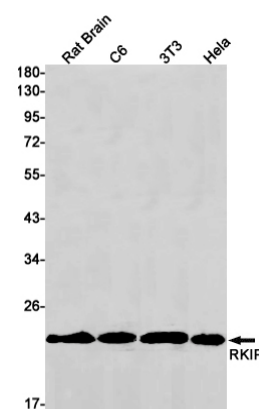
1:50-1:200

1:20

1:50

1:20

Validations



Western blot detection of RKIP in Rat Brain, C6, 3T3, HeLa cell lysates using RKIP Rabbit mAb(1:1000 diluted). Predicted band size: 40kDa. Observed band size: 40kDa.