

Anti-CRTC3 Rabbit antibody



Catalog Number: 168921

General Information

Product name:

Anti-CRTC3 Rabbit antibody

Immunogen:

Applications:

WB, ICC/IF

Specificity:

Human, Mouse, Rat

Antibody description:

CRTC3 Rabbit monoclonal antibody

Properties

Preparation:

Antigen: A synthetic peptide of human CRTC3

Formulation:

Supplied in 50nM Tris-Glycine(pH 7.4), 0.15M NaCl, 40%Glycerol, 0.01% sodium azide and 0.05% BSA.

Storage:

Store at 4°C short term. Aliquot and store at -20°C long term. Avoid freeze / thaw cycle.

Clonality:

Monoclonal antibody

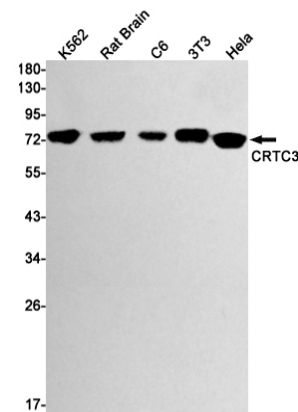
Ig Type:Rabbit IgG

Applications

WB: 1/2000

ICC/IF: 1/20

Validations



Western blot detection of CRTC3 in K562,Rat Brain,C6,3T3,Hela cell lysates using CRTC3 Rabbit mAb(1:1000 diluted).Predicted band size:67kDa.Observed band size:78kDa.